



DLT RETRIEVABLE PACKER

10-3/4" X 4-1/2" IF TOOL JOINT

Manual No:
DL-688-10750-213

Revision: **L**

Revision Date:
09/21/2018

Authored by: B.Mathis

Approved by: D.Hushbeck

A) DESCRIPTION

The DLT Retrievable Packer is a compression set packer with hydraulic hold down that is designed to provide an extra measure of dependability for rugged service. The hydraulic actuated upper hold-down provides more than the usual surface area to ensure that the packer will not move up the hole. It is ideally suited for high pressure, high temperature service work.

Some unique features of this packer include positive rotational locks on all internal connections, which allow for extreme values of torque (left-hand or right-hand) to be transmitted through the packer. Back-up rings on all the o-rings provide for more reliable sealing at high temperature and pressure.

This packer also comes with extra-long top and bottom subs which allow for hydraulic tong make-up and break out.

B) RELATED TOOLS (sold separately)

B-1) 4-1/2" V-III Unloader— actual P/N varies depending on customer requirements.

C) SPECIFICATION GUIDE

CASING			TOOL		THREAD CONNECTION BOX UP / PIN DOWN	PART NUMBER
SIZE (INCHES)	WEIGHT (LBS/FT)	RECOMMENDED HOLE SIZE (INCHES)	GAGE OD (INCHES)	NOMINAL ID (INCHES)		
10-3/4	51.0 – 55.5	9.760 – 9.850	9.500	3.75	4-1/2 IF TOOL JOINT	68810A
	60.7 – 65.7	9.560 – 9.660	9.375	3.75	4-1/2 IF TOOL JOINT	68810B
	71.1 – 73.2	9.406 – 9.450	9.125	3.75	4-1/2 IF TOOL JOINT	68810C

NOTE₁: Tools listed are right-hand set / right-hand release.

NOTE₂: Tools listed have standard Nitrile trim. Other elastomer trim is available – contact D&L Oil Tools.

DIFFERENTIAL PRESSURE (MAX)	TENSILE LOAD THRU TOOL (MAX)	HANGING WEIGHT ON SET TOOL (MAX)	TORQUE THRU TOOL (MAX)
10,000 PSI	460,000 LBS	460,000 LBS [†]	20,000 FT-LBS

[†]Casing must be cemented for this load rating.

D) PRE-INSTALLATION INSPECTION PROCEDURES

CAUTION₁: D&L ships tool connections made-up **HAND TIGHT**—labeled with hand-tight tape on the tool (Fig. 1)—unless stated otherwise. Tighten/torque all connections properly before operating tool.



Fig. 1

GENERAL THREAD CONNECTION TORQUE RECOMMENDATIONS (General thread torque recommendations not applicable to mated parts specified in SPEC014)			
STUB ACME / ACME THREADS	INTERNAL TAPERED TUBING THREADS		PREMIUM THREADS
	UP TO 2-3/8"	GREATER THAN 2-3/8"	
600 – 800 FT-LBS	600 – 800 FT-LBS	800 – 1,200 FT-LBS	Consult thread manufacturer's recommendations.

D & L OIL TOOLS
P.O. BOX 52220 TULSA, OK 74152
PHONE: (800) 441-3504 www.dloilttools.com

This document is uncontrolled when printed. For the current revision, refer to the electronic copy in the Vault database.



DLT RETRIEVABLE PACKER

10-3/4" X 4-1/2" IF TOOL JOINT

Manual No:
DL-688-10750-213

Revision: **L**

Revision Date:
09/21/2018

Authored by: B.Mathis

Approved by: D.Hushbeck

D) PRE-INSTALLATION INSPECTION PROCEDURES (cont'd)

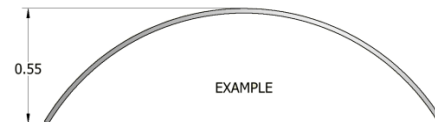
GENERAL SCREW TORQUE RECOMMENDATIONS (General screw torque recommendations not applicable to mated parts specified in SPEC014)									
SCREW SIZE (INCHES)	#6	#8	#10	1/4	5/16	3/8	7/16	1/2	5/8 and larger
TORQUE RANGE (INCH-POUNDS)	5 – 8	10 – 15	18 – 25	25 – 40	50 – 80	90 – 135	160 – 210	250 – 330	450 - 650

Before first use, D&L recommends disassembly and inspection of the tool unless stated otherwise. Ensure parts have not been damaged during shipping. Replace damaged parts with D&L replacement parts. Contact D&L sales for replacement part information.

Before re-using the tool, D&L recommends disassembly and inspection of the tool. Clean parts and ensure parts are in good working condition. Replace worn or damaged parts with D&L replacement parts.

When redressing the tool, D&L recommends replacement of all seals, elements, o-rings, shear screws, etc. Contact D&L sales for redress kit and/or other replacement part information.

DRAG BLOCK SPRING (MIN HEIGHT)	HOLD DOWN BUTTON SPRING (MIN HEIGHT)
0.55 INCHES	0.55 INCHES



NOTE₃: Before assembly, measure height of drag block springs and hold down button springs. Refer to spring height table – if height of an individual spring is less than the minimum height, replace spring(s).

E) SETTING PROCEDURES

CAUTION₂: Do not run the tool without properly tightening connections. Running the tool with loose connections may damage the tool and cause malfunction.

NOTE₄: Minimum force required to set 10-3/4" DLT Retrievable Packer: 25,000 lbs.

Run the DLT Packer to setting depth in conjunction with a D&L V-III Unloader. The unloader should remain open while running in. Pick up the work string and rotate it 1/4 turn to the right at the packer. Slack off weight on the packer to set the slips and compress the packing elements. Release the torque after slacking off 6 feet to allow the unloader to close and lock. The set down weight must remain on the packer throughout well operation.

F) RELEASING PROCEDURES

Rotate the work string 1/4 turn to the right and pick up on the work string to open the D&L V-III Unloader. Allow time for the work string and casing pressures to equalize. Continued upward movement of the work string relaxes the packing elements, un-sets the slips, and automatically re-jays the packer. The tool may now be moved and re-set, or pulled from the well.

NOTE₅: Coordination of the unloader and the packer J-slots is imperative. The setting and releasing procedures above represent use of a right-hand open and right-hand close unloader J-slot with a right-hand set, automatic-release packer J-slot.

CAUTION₃: If the DLT Packer is run with a Retrievable Bridge Plug, make sure that the J-slots on the Retrievable Bridge Plug, Retrieving Tool, Unloader and Packer are compatible. Whichever direction the plug is set, the retrieving tool should release and the packer should set in the opposite direction.

Example: Right-hand set/right-hand releasing plug is used with a left-hand release retrieving tool, left-hand set packer and a left-hand close/right-hand open unloader.



DLT RETRIEVABLE PACKER

10-3/4" X 4-1/2" IF TOOL JOINT

Manual No:
DL-688-10750-213

Revision: **L**

Revision Date:
09/21/2018

Authored by: B.Mathis

Approved by: D.Hushbeck

G) STORAGE RECOMMENDATIONS

When preparing the tool for storage, follow the Pre-Installation Inspection Procedures. Re-assemble the tool with connections hand-tight only and in running position if applicable. Elements should be in a relaxed state—free from tension, compression, and other stresses that could cause deformation.

Store the tool, if possible, in an enclosed, temperature and humidity controlled environment. Avoid excessively high temperatures over long periods of time. Shield elastomeric parts from ultraviolet light sources. Keep tool dry and protected from condensation. Do not store in contact with or near volatile or corrosive chemicals. Do not store near ozone generating equipment or operations such as welding.

H) ELASTOMER TRIM TEMPERATURE GUIDE

NITRILE (STD)			
TEMPERATURE RANGE (F°)	DUROMETER		
	END	MIDDLE	END
40° - 125°	80	70	80
125° - 250°	90	70	90
150° - 250°	90	80	90
250° +	Contact D&L Sales		

I) RECOMMENDED TOOLS

I-1) HAND TOOLS

- VISE
- GLOVES
- ALLEN WRENCHES
- TAPE MEASURE
- O-RING PICK
- BAR
 - 1/2-INCH
 - 3/4-INCH
- PAINT BRUSH, 2-INCH
- PIPE WRENCH, 3-FT (2 EA)
- "CHEATER" PIPE, 4-FT LONG
- STRAP WRENCH
- ADJUSTABLE WRENCH, 12-INCH
- CORDLESS DRILL, 18V
- SNAP RING SPREADER PLIERS
- ALIGNING PUNCH
- SCREWDRIVER SET, FLAT-TIPPED
- SOCKET SETS
 - 3/8-INCH DRIVE
 - 1/2-INCH DRIVE
- HAMMERS
 - SLEDGE
 - BALL PEEN
 - DEAD BLOW

I-2) SPECIAL TOOLS

ITEM	QTY	DESCRIPTION	PART NUMBER
T1	1	DRAG BLOCK ASSEMBLY TOOL	AT010110
T2	1	BUTTON REMOVAL TOOL	AT-BRT000
T3	1 GAL	KOPR-KOTE ANTI-SEIZE LUBRICANT	DL-KOPR-KOTE-1G



DLT RETRIEVABLE PACKER

10-3/4" X 4-1/2" IF TOOL JOINT

Manual No:
DL-688-10750-213

Revision: **L**

Revision Date:
09/21/2018

Authored by: B.Mathis

Approved by: D.Hushbeck

J) DISASSEMBLY

NOTE₆: Ensure vise is capable of handling weight of tool.

NOTE₇: Support tool during disassembly and assembly with jack stands as necessary.

J-1) Clamp top sub (1) in vise.

J-1.1) Unscrew and remove set screws (19) from J-pin bottom sub (23). Move J-body (20) as needed to access set screws (19).

J-1.2) Unscrew and remove J-pin bottom sub (23) from mandrel (2).

NOTE₈: Drag block body assembly must be free to rotate.

J-1.2.1) Remove o-ring (29) and back-up rings (28) from J-pin bottom sub (23).

J-1.3) Compress drag blocks (22) with drag block assembly tool (T1).

J-1.4) Unscrew and remove set screws (19) from J-body (20).

J-1.5) Unscrew and remove J-body (20) from drag block body (18) (**NOTE₉:** Left-hand threads).

J-1.6) Remove drag block retainer (21) from drag block body (18).

J-1.7) Release drag blocks (22). Remove drag blocks (22) and drag block springs (3) from drag block body (18).

J-1.8) Wedge slips (17) outward (if needed). Remove drag block body assembly and disassemble:

J-1.8.1) Remove wedges (if needed). Remove slip assemblies from drag block body (18).

J-1.8.1.1) Unscrew and remove button head screws (24) from slips (17).

J-1.8.1.2) Remove slip springs (25) from slips (17).

J-1.9) Unscrew and remove cone (16) from rubber retainer (15).

J-1.10) Loosen lower cap (7) from hold down body (6) enough to align cut-outs in lower cap (7) with threaded holes in hold down body (6).

J-1.11) Unscrew and remove set screws (19) from lower end of hold down body (6).

J-1.12) Unscrew mandrel (2) from hold down body (6).

J-1.13) Remove mandrel assembly and disassemble:

J-1.13.1) Remove rubber spacers (12), elements (13, 14), and rubber retainer (15) from mandrel (2).

J-1.14) Unscrew and remove lower cap (7) from hold down body (6).

J-1.15) Unscrew and slide upper cap (4) temporarily up to clear hold down straps (9). Upper cap (4) will be removed in later step.

J-1.16) Unscrew and remove flat head cap screws (10) from hold down body (6).

J-1.17) Remove hold down straps (9) from hold down body (6).

J-1.18) Remove hold down button springs (8) from hold down buttons (5).

J-1.19) Using button removal tool (T2), remove hold down buttons (5) from hold down body (6).

J-1.19.1) Remove o-rings (27) and back-up rings (26) from hold down buttons (5).

J-1.20) Unscrew and remove set screws (19) from top sub (1).

J-1.21) Unscrew hold down body (6) from top sub (1).

J-1.22) Remove hold down body (6) and volume tube (11) from top sub (1).

J-1.23) Separate hold down body (6) from volume tube (11).

J-1.23.1) Remove upper cap (4) from hold down body (6).

J-1.23.2) Remove o-ring (33) and back-up rings (32) from lower end of hold down body (6).

J-1.23.3) Remove o-ring (31) and back-up rings (30) from upper end of hold down body (6).

J-2) Unclamp and remove top sub (1) from vise.

J-3) Remove o-ring (35) and back-up rings (34) from top sub (1).



DLT RETRIEVABLE PACKER

10-3/4" X 4-1/2" IF TOOL JOINT

Manual No:
DL-688-10750-213

Revision: **L**

Revision Date:
09/21/2018

Authored by: B.Mathis

Approved by: D.Hushbeck

K) ASSEMBLY

NOTE₁₀: Clean and inspect all parts. Replace all worn and damaged parts. Install parts in proper order, and orientation and tighten/torque all connections properly.

CAUTION₄: To ensure tool operates properly, install o-rings in o-ring grooves **NOT** in thread reliefs (Fig. 2).

NOTE₁₁: Apply KOPR-KOTE anti-seize lubricant (T3) on STUB ACME and drill pipe connections when making up connections.

NOTE₆: Ensure vise is capable of handling weight of tool.

NOTE₇: Support tool during disassembly and assembly with jack stands as necessary.

NOTE₁₈: If assembling tool with replacement mated parts (items 1 & 6, 2 & 6, 18 & 20, and 2 & 23), match counterbore holes (aka drill flat bottom holes) to mating part according to SPEC014.

K-1) Install o-ring (35) and back-up rings (34) (Det. B) in o-ring groove in top sub (1).

K-2) Clamp top sub (1) in vise.

K-2.1) Install o-ring (31) and back-up rings (30) (Det. B) in o-ring groove in upper end of hold down body (6).

K-2.2) Install o-ring (33) and back-up rings (32) (Det. B) in o-ring groove in lower end of hold down body (6).

K-2.3) Set upper cap (4) onto hold down body (6). Upper cap (4) will be screwed onto hold down body (6) in later step.

K-2.4) Install volume tube (11) into hold down body (6). Screw hold down body (6) into top sub (1). Align counterbore holes in hold down body (6) with threaded holes in top sub (1).

CAUTION₅: Do not rip or tear o-ring or back-up rings during installation.

K-2.5) Screw set screws (19) into top sub (1).

K-2.6) Assemble and install hold down buttons into hold down body (6):

K-2.6.1) Install o-rings (27) and back-up rings (26) (Det. B) in o-ring grooves in hold down buttons (5).

K-2.6.2) Install hold down buttons (5) into hold down body (6) (Fig. 3).

CAUTION₅: Do not rip or tear o-rings or back-up rings during installation.

K-2.6.3) Align slots in hold down buttons (5) with slots in hold down body (6). Set hold down button springs (8) in place on hold down buttons (5).

NOTE₁₂: Measure height of each hold down button spring. Refer to spring height table for minimum height replacement recommendations.

NOTE₁₃: Install two (2ea) hold down button springs per hold down button in proper direction (Fig. 4).

K-2.6.4) Set hold down straps (9) in place on hold down body (6).

K-2.6.5) Screw flat head cap screws (10) into hold down body (6).

K-2.6.6) Screw upper cap (4) onto hold down body (6) capturing ends of hold down straps (9).

K-2.6.7) Screw lower cap (7) onto hold down body (6) capturing ends of hold down straps (9). Align cut-outs in lower cap (7) with threaded holes in hold down body (6) (Fig. 5).

K-2.6.8) If pressure testing of the hold down body assembly is desired, install pressure test equipment and test hold down body assembly at this time (refer to technical manual *DL-PTF-10750-1162*).

NOTE₁₉: Pressure testing of the hold down body assembly is not mandatory.

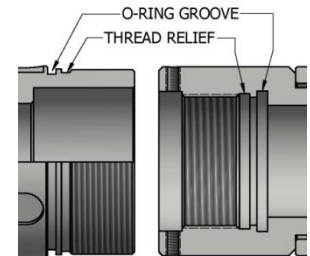


Fig. 2



Fig. 3



Fig. 4

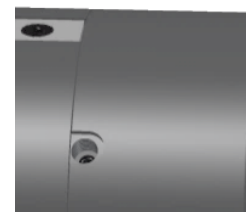


Fig. 5



DLT RETRIEVABLE PACKER

10-3/4" X 4-1/2" IF TOOL JOINT

Manual No:
DL-688-10750-213

Revision: **L**

Revision Date:
09/21/2018

Authored by: B.Mathis

Approved by: D.Hushbeck

K) ASSEMBLY (cont'd)

K-2.7) Assemble and install mandrel assembly:

K-2.7.1) Install rubber retainer (15), elements (13, 14), and rubber spacers (12) onto mandrel (2).

K-2.7.2) Install mandrel assembly onto volume tube (11).

K-2.7.3) Screw mandrel (2) into hold down body (6). Align counterbore holes in mandrel (2) with threaded holes in hold down body (6).

CAUTION₅: Do not rip or tear o-ring or back-up rings during installation.

K-2.8) Tighten lower cap (7) onto hold down body (6).

K-2.9) Screw set screws (19) into hold down body (6) (Fig. 5).

K-2.10) Screw cone (16) into rubber retainer (15).

K-2.11) Assemble and install drag block body assembly:

K-2.11.1) Set slip springs (25) in place on slips (17).

NOTE₁₄: Install three (3ea) slip springs per slip (Fig. 6).

K-2.11.2) Screw button head screws (24) into slips (17).

K-2.11.3) Install slips (17) into drag block body (18). Wedge slips outward.

K-2.11.4) Install drag block body assembly onto mandrel (2). Remove wedges.

K-2.12) Install drag blocks (22) and drag block springs (3) into drag block body (18).

NOTE₁₅: Install six (6ea) drag block springs per drag block (Fig. 7).

NOTE₁₆: Measure height of each drag block spring. Refer to spring height table for minimum height replacement recommendations.

K-2.13) Compress drag blocks (22) with drag block assembly tool (T1).

K-2.14) Install drag block retainer (21) onto drag block body (18) capturing ends of drag blocks (22).

K-2.15) Screw J-body (20) onto drag block body (18) (**NOTE₉:** Left-hand threads). Align threaded holes in J-body (20) with counterbores in drag block body (18).

K-2.16) Screw set screws (19) into J-body (20).

K-2.17) Release drag blocks and remove drag block assembly tool (T1).

K-2.18) Install o-ring (29) and back-up rings (28) (Det. B) in o-ring groove in J-pin bottom sub (23).

K-2.19) Screw J-pin bottom sub (23) onto mandrel (2). Align threaded holes in J-pin bottom sub (23) with counterbore holes in mandrel (2).

NOTE₈: Drag block body assembly must be free to rotate.

CAUTION₅: Do not rip or tear o-ring or back-up rings during installation.

K-2.20) Screw set screws (19) into J-pin bottom sub (23). Move J-body (20) as needed to access threaded holes for set screws (19).

K-3) Unclamp top sub (1) from vise and remove assembled tool.

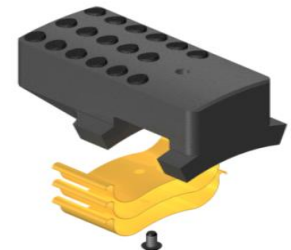


Fig. 6

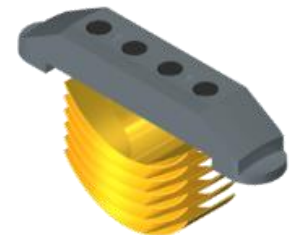



Fig. 7

	DLT RETRIEVABLE PACKER 10-3/4" X 4-1/2" IF TOOL JOINT	Manual No: DL-688-10750-213
		Revision: L
		Revision Date: 09/21/2018
Authored by: B.Mathis		Approved by: D.Hushbeck


L) PARTS LIST

ITEM	QTY	DESCRIPTION	MATERIAL	51.0 – 55.5# P/N 68810A	60.7 – 65.7# P/N 68810B	71.1 – 73.2# P/N 68810C
1	1	TOP SUB **	DLMS110	68895612		
2	1	MANDREL **	DLMS110	68810210		
3	72	DRAG BLOCK SPRING *	INCONEL	9101900		
4	1	UPPER CAP	DLMS110	68810370		
5	8	HOLD DOWN BUTTON W/CARBIDE *	DLMSSP	68810976		
6	1	HOLD DOWN BODY **	DLMS110	68810310		
7	1	LOWER CAP	DLMS110	68810A820	68810B820	68810C820
8	16	HOLD DOWN BUTTON SPRING *	INCONEL	9101900		
9	4	HOLD DOWN STRAP *	DLMS110	68095360		
10	12	FLAT HEAD CAP SCREW 5/16-18 UNC X 3/4 *	STEEL	FHSC031C075		
11	1	VOLUME TUBE	DLMS110	68810220		
12	2	RUBBER SPACER	DLMS110	62010840HT	68810B840HT	68810C840HT
13	1	ELEMENT *	70 DURO NITRILE	62010511	68810B511	68810C511
14	2	ELEMENT *	90 DURO NITRILE	62010513	68810B513	68810C513
15	1	RUBBER RETAINER	DLMS110	68810A850	68810B850	68810C850
16	1	CONE	DLMS110	68810410		
17	6	SLIP W/CARBIDE *	DLMS110	68810A110	68810C110	
18	1	DRAG BLOCK BODY *	DLMS110	68810335		
19	16	FULL DOG POINT SET SCREW 5/8-11 UNC X 3/4 *	STEEL	DPS062C075§		
20	1	J-BODY **	DLMS110	68810355		

* Common repair parts

** Mated parts cannot be replaced separately without field adaptation.

§Set screws (P/N SSS062C075) used in Rev. G.

	DLT RETRIEVABLE PACKER 10-3/4" X 4-1/2" IF TOOL JOINT	Manual No: DL-688-10750-213
		Revision: L
		Revision Date: 09/21/2018
Authored by: B.Mathis		Approved by: D.Hushbeck


L) PARTS (cont'd)

ITEM	QTY	DESCRIPTION	MATERIAL	51.0 – 55.5# P/N 68810A	60.7 – 65.7# P/N 68810B	71.1 – 73.2# P/N 68810C
21	1	DRAG BLOCK RETAINER	DLMS110	68810910		
22	12	DRAG BLOCK W/CARBIDE *	DLMSDB4	9080900C		9070900C
23	1	J-PIN BOTTOM SUB *	DLMS110	68810C636		
24	6	BUTTON HEAD CAP SCREW #10-24 UNC X 3/8 *	STEEL	BHSC1024C037		
25	18	SLIP SPRING *	INCONEL	32070950		
26	16	236 PARBAK 8 SERIES BACK-UP RING *	TEFLON	04500236		
27	8	236 O-RING *	90 DURO NITRILE	90236		
28	2	349 PARBAK 8 SERIES BACK-UP RING *	TEFLON	04500349		
29	1	349 O-RING *	90 DURO NITRILE	90349		
30	2	351 PARBAK 8 SERIES BACK-UP RING *	TEFLON	04500351		
31	1	351 O-RING *	90 DURO NITRILE	90351		
32	2	359 PARBAK 8 SERIES BACK-UP RING *	TEFLON	04500359		
33	1	359 O-RING *	90 DURO NITRILE	90359		
34	2	363 PARBAK 8 SERIES BACK-UP RING *	TEFLON	04500363		
35	1	363 O-RING *	90 DURO NITRILE	90363		

* Common repair parts

** Mated parts cannot be replaced separately without field adaptation.

REDRESS KIT (RDK)	68810A050	68810B050	68810C050
ASSEMBLED WEIGHT	1,177 LBS	1,170 LBS	1,162 LBS

	DLT RETRIEVABLE PACKER 10-3/4" X 4-1/2" IF TOOL JOINT	Manual No: DL-688-10750-213
		Revision: L
		Revision Date: 09/21/2018
Authored by: B.Mathis		Approved by: D.Hushbeck

L) PARTS LIST (cont'd)

L-1) ELASTOMER TRIM OPTIONS

L-1.1) 80 DUROMETER

NOTE₁₇: For temperature range, refer to Elastomer Trim Temperature Guide.

ITEM	QTY	DESCRIPTION	MATERIAL	51.0 – 55.5# P/N 68810A	60.7 – 65.7# P/N 68810B	71.1 – 73.2# P/N 68810C
13, 14	†	ELEMENT *	80 DURO NITRILE	62010512	68810B512	68810C512

† Quantity varies per selected Temperature Range.

* Common repair parts



DLT RETRIEVABLE PACKER

10-3/4" X 4-1/2" IF TOOL JOINT

Manual No:
DL-688-10750-213

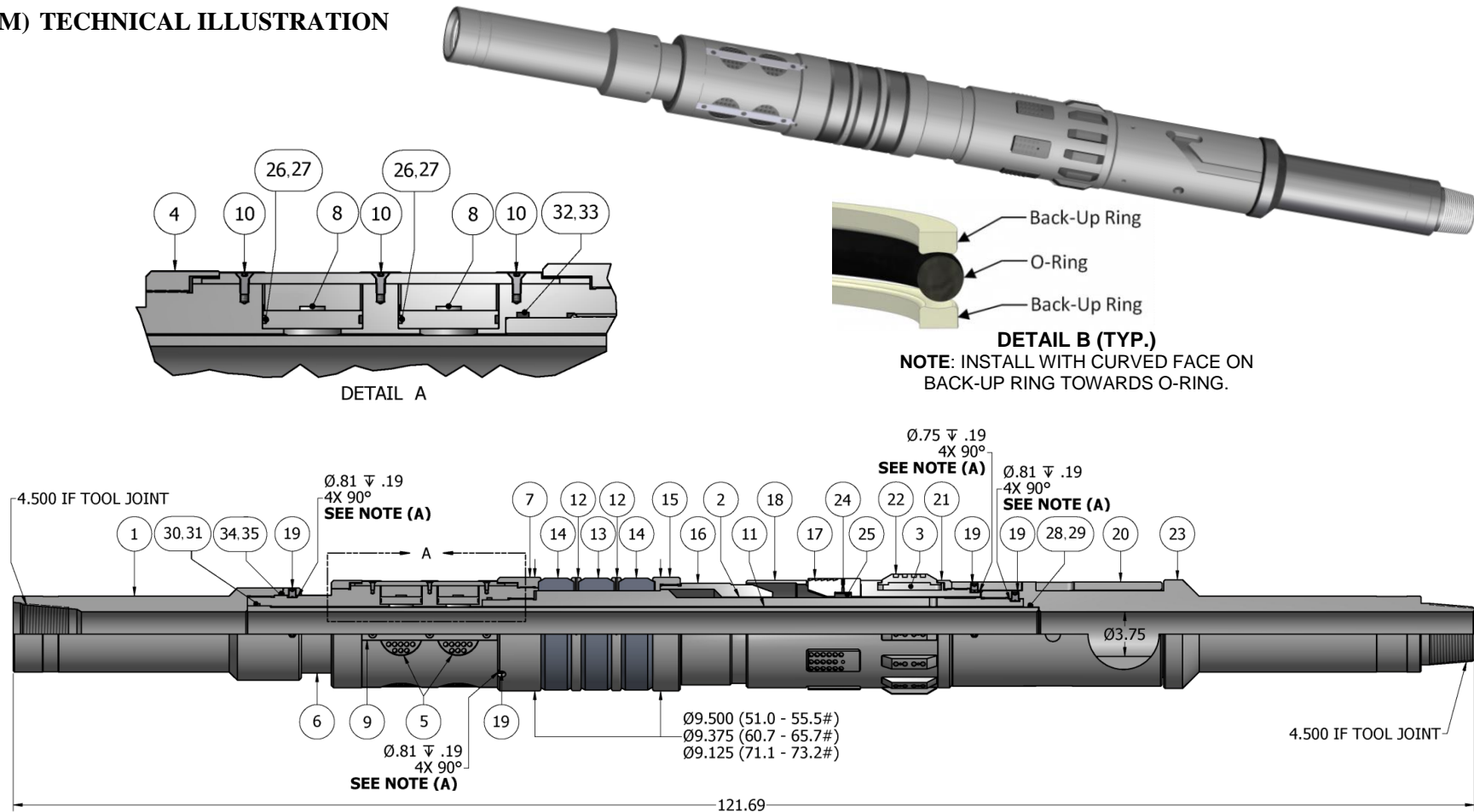
Revision: **L**

Revision Date:
09/21/2018


Authored by: B.Mathis

Approved by: D.Hushbeck

M) TECHNICAL ILLUSTRATION



NOTE₁₈: If assembling tool with replacement mated parts (items 1 & 6, 2 & 6, 18 & 20, and 2 & 23), match counterbore holes (aka drill flat bottom holes) to mating part according to SPEC014.

	DLT RETRIEVABLE PACKER 10-3/4" X 4-1/2" IF TOOL JOINT	Manual No: DL-688-10750-213
		Revision: L
		Revision Date: 09/21/2018
Authored by: B.Mathis		Approved by: D.Hushbeck

N) REVISION HISTORY

DATE	REVISION	DESCRIPTION OF CHANGES	REVISED BY	APPROVED BY
09/21/2018	L	Added K-2.6.8; Revised note19	J.Anderson	D.Hushbeck
08/24/2018	K	Added note19	J.Anderson	D.Hushbeck
04/05/2017	J	Revised Elastomer Trim Temperature Guide 40° - 125° was 70° - 125°	J.Anderson	D.Hushbeck
12/13/2016	H	Revised P/N DPS062C075 was SSS062C075	J.Anderson	D.Hushbeck
09/23/2016	G	Revised Assembly for mated parts, Fig. 4	J.Anderson	D.Hushbeck
04/05/2016	F	Added General Screw Torque Recommendations	J.Anderson	D.Hushbeck
12/08/2015	E	Revised Elastomer Trim Temperature Guide temp. range 150° - 250° was 250° - 300°, Contact D&L Sales for temp. over 250° was 300°; Added hanging weight from set tool; Removed tool drift ID	J.Anderson	K.Riggs
08/13/2015	D	Added – Spring Height Table, J-1.10, Note12, K-2.8, K-2.10, Fig. 6, Note16, Technical Illustration - Detail B; Revised – Note3, Fig. 5, K-2.11, Material - Slips (Item 17) was P-110, Drag Blocks (Item 22) was 4130, Optional Parts section w/80 Durometer elements	B.Mathis	D.Hushbeck
05/11/2015	C	Added – Note2 (Page 1), ELASTOMER TRIM TEMPERATURE GUIDE was ELEMENT SELECTION GUIDE, Strap Wrench (to RECOMMENDED TOOLS), Note6 & Note 7 to ASSEMBLY, Det. B, Note3 to K.2.6.3, Note(A) to K.2.15, Note(A) to K.2.18, Revised – PARTS LIST – P/N 68810B – Item 13 was 68810B513, P/N 68810B – Item 14 was 68810B511, Item 5 was Item 17, Item 17 was 5, TECHNICAL ILLUSTRATION – NOTE (A) was NOTE (9)	B.Mathis	B.Oligschlaeger
10/22/2014	B	Added - Related tools, pre-installation inspection and storage procedures, recommended tools, notes for disassembly and assembly, redress kit (RDK) P/Ns, revision history; Revised - P/N 68810C Specification Guide recommended weight range was 71.1 – 93.2#	J.Anderson	J.McArthur