



CASING PACKER DOUBLE ELEMENT 10-3/4" X 7"

Manual No:
DL-441-10750-445

Revision: **A**

Revision Date:
10/27/2011

Authored by: B.Mathis

Approved by: D.Hushbeck

A) DESCRIPTION

The D&L Casing Packer is a large bore single grip tool used to isolate damaged casing and for production or injection. It can be run in tension or compression and can be used as a liner hanger when equipped with a right-hand release sub. Coarse, deep wickered slips allow the packer to set in open-hole or scaly casing. For open-hole set, casing packers are equipped with two elongated packing elements to assure a positive seal.

Special Features:

- Set/run in tension or compression
- Can be used as a liner hanger
- Available with:
 - Right-hand or left-hand set
 - Manual or automatic release
- Applicable for set in open hole
- Full opening
- Coarse, deep wickered slip teeth

B) SPECIFICATION GUIDE

CASING		RECOMMENDED HOLE SIZE (INCHES)	MAX TOOL OD (INCHES)	MIN TOOL ID (INCHES)	THREAD CONNECTION BOX UP / BOX DOWN	PART NUMBER
SIZE (INCHES)	WEIGHT (LBS/FT)					
10-3/4	32.75 – 55.5#	9.760 – 10.192	9.500	6.50	7" LTC	44110

C) SETTING PROCEDURE

C-1) TENSION

Run packer to setting depth. Slack off 3" and rotate 1/4 turn to the right at the packer. Pull desired tension.

C-2) COMPRESSION

Run packer to setting depth. Slack off 3" and rotate 1/4 turn to the left at the packer. Apply desired weight.

D) RELEASING PROCEDURE

D-1) TENSION

Slack off string and rotate 1/4 turn to the left at the packer.

D-2) COMPRESSION

Pick up and rotate 1/4 turn to the right at the packer.

D & L OIL TOOLS
P.O. BOX 52220 TULSA, OK 74152
PHONE: (800) 441-3504 www.dlmfg.com



CASING PACKER DOUBLE ELEMENT 10-3/4" X 7"

Manual No:
DL-441-10750-445

Revision: **A**

Revision Date:
10/27/2011

Authored by: *B.Mathis*

Approved by: *D.Hushbeck*

E) DISASSEMBLY

- E-1) Clamp top sub (1) in vise.
 - E-1.1) Unscrew and remove bottom sub (10) from mandrel (2).
 - E-1.2) Remove elements (8), rubber spacer (7), and cone (6) from mandrel (2).
 - E-1.3) Unscrew and remove flat head cap screws (13) from cage ring (11).
 - E-1.4) Remove drag springs (3) and slip arm assemblies from J-body (9).
 - E-1.5) Disassemble slip arm assemblies:
 - E-1.5.1) Unscrew and remove flat head cap screws (12) from slip arms (5).
 - E-1.5.2) Remove slips (4) from slip arms (5).
 - E-1.6) Unscrew and remove low head cap screw (14) from mandrel (2).
 - E-1.7) Remove J-body (9) from cage ring (11) and mandrel (2).
- E-2) Remove top sub (1) from vise. Clamp lower end of mandrel (2) in vise.
 - E-2.1) Unscrew and remove top sub (1) from mandrel (2).
 - E-2.2) Remove cage ring (11) from mandrel (2).
- E-3) Unclamp and remove mandrel (2) from vise.

F) ASSEMBLY

NOTE: Clean and inspect all parts. Replace all worn and damaged parts. Install parts in proper order & orientation.

- F-1) Clamp lower end of mandrel (2) in vise.
 - F-1.1) Install cage ring (11) onto mandrel (2).
 - F-1.2) Screw top sub (1) onto mandrel (2).
- F-2) Remove mandrel (2) from vise. Clamp top sub (1) in vise.
 - F-2.1) Install J-body (9) onto mandrel (2) and over cage ring (11).
 - F-2.2) Align slot in J-body (9) with threaded hole in mandrel (2). Screw low head cap screw (14) into mandrel (2).
 - F-2.3) Assemble slip arm assemblies and install:
 - F-2.3.1) Set slips (4) in place on slip arms (5).
 - F-2.3.2) Screw flat head cap screws (12) into slip arms (5).
 - F-2.4) Set drag springs (3) and slip arm assemblies in place on J-body (9).
 - F-2.5) Screw flat head cap screws (13) into cage ring (11).
 - F-2.6) Install cone (6), rubber spacer (7), and elements (8) onto mandrel (2).
 - F-2.7) Screw bottom sub (10) onto mandrel (2).
- F-3) Unclamp top sub (1) from vise and remove assembled tool.



**CASING PACKER
DOUBLE ELEMENT
10-3/4" X 7"**

Manual No:
DL-441-10750-445

Revision: **A**

Revision Date:
10/27/2011

Authored by: *B.Mathis*

Approved by: *D.Hushbeck*

G) PARTS LIST

ITEM	QTY	DESCRIPTION	MATERIAL	P/N 44110 (32.75 – 55.5#)
1	1	COUPLING	1026	CP700LTC700LTC
2	1	MANDREL WELDMENT	1018	44110210
3	4	DRAG SPRING		45570920
4	4	SLIP	1018	45510110
5	4	SLIP ARM	STAINLESS STEEL	45570900
6	1	CONE	1018	44110410
7	1	RUBBER SPACER	1018	44110840
8	2	ELEMENT	80 DURO NITRILE	44110512
9	1	J-BODY	1018	44110310
10	1	BOTTOM SUB	1018	44010610
11	1	CAGE RING	1018	44110210E
12	8	FLAT HEAD SOCKET CAP SCREW 5/16-18 UNC X 1/2	STEEL	FHSC031C050
13	16	FLAT HEAD SOCKET CAP SCREW 5/16-18 UNC X 3/4	STEEL	FHSC031C075
14	1	LOW HEAD SOCKET CAP SCREW 1/2-13 UNC X 7/16	STEEL	LHSC050C043
REDRESS KIT				44110050
ASSEMBLED WEIGHT				227 LBS



CASING PACKER DOUBLE ELEMENT 10-3/4" X 7"

Manual No:
DL-441-10750-445

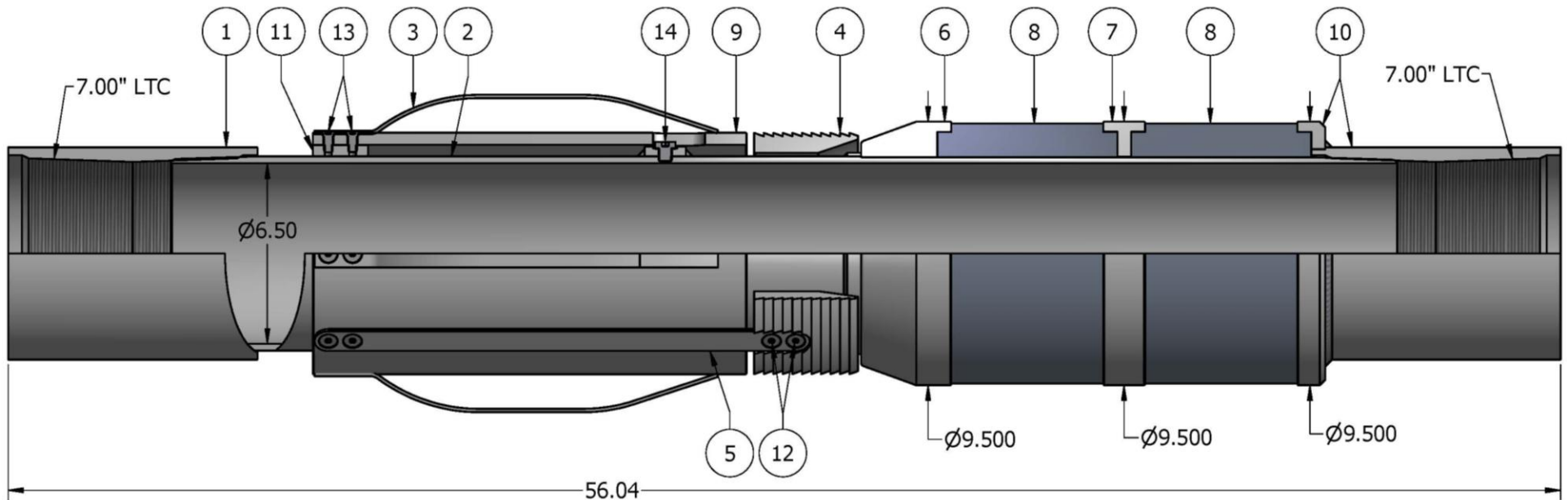
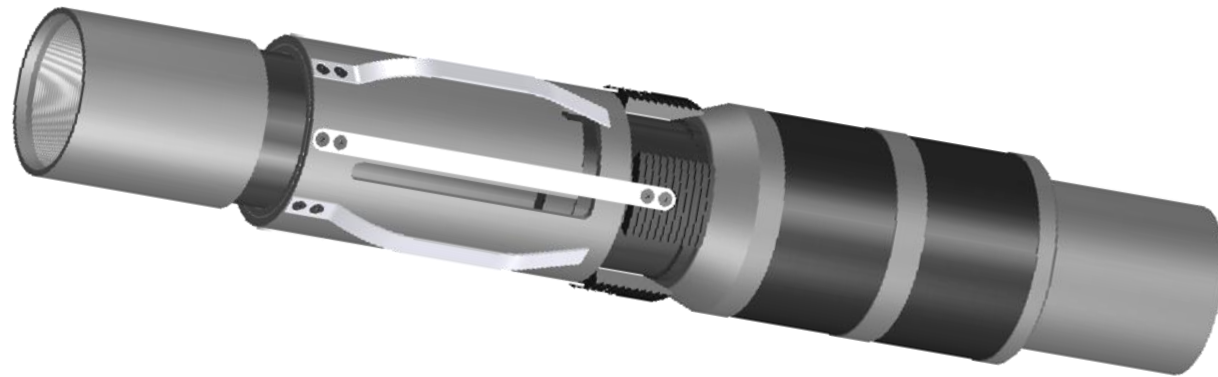
Revision: **A**

Revision Date:
10/27/2011

Authored by: *B.Mathis*

Approved by: *D.Hushbeck*

H) TECHNICAL ILLUSTRATIONS



This document is uncontrolled when printed. For the current revision, refer to the electronic copy in the Vault database.