



# ASI-X PACKER

## 5-1/2" X 2-3/8"

Manual No:  
**DL-603-5500-003**

Revision: **K**

Revision Date:  
**07/20/2017**

Authored by: S. White

Approved by: D. Hushbeck

### A) DESCRIPTION

The ASI-X Single String Double-Grip Production Packer is the most versatile of the mechanically set retrievable packers and may be used in any production application. This packer is suited for treating, testing, or injection applications, in pumping or flowing wells, either deep or shallow. This packer can be left in tension or compression depending on well conditions and the required application.

A large internal by-pass reduces swabbing when running and retrieving. The by-pass closes when the packer is set and opens prior to releasing the upper slips when retrieving to allow pressure equalization. The J-slot design allows easy setting and releasing; 1/4 turn right-hand set, 1/4 turn right-hand release.

The standard ASI-X Packer is designed for differential pressures up to 7,000 PSI (unless noted otherwise). This packer is also available in an HT version which is designed for differential pressures up to 10,000 PSI (unless noted otherwise). The HT version allows this packer to be utilized in completions where high pressure treating operations are performed and it is desirable to leave the tool in the well for production.

### B) RELATED TOOLS (sold separately)

B-1) 2-3/8" DT-2 On/Off Tool (P/N varies)—refer to technical manual *DL-512-2375-360*.

B-2) 2-3/8" Stinger—actual P/N varies depending on customer requirements.

### C) SPECIFICATION GUIDE

CASING			TOOL			THREAD CONNECTION BOX UP / PIN DOWN	PART NUMBER
SIZE (INCHES)	WEIGHT (LBS/FT)	RECOMMENDED HOLE SIZE (INCHES)	GAGE OD (INCHES)	NOMINAL ID (INCHES)	DRIFT ID (INCHES)		
5-1/2	14.0 – 20.0	4.751 – 5.023	4.625	2.00	1.901	2-3/8 EUE	60355 60355H <sup>1</sup> 60355V <sup>2</sup>
	20.0 – 23.0	4.670 – 4.778	4.500	2.00	1.901	2-3/8 EUE	60357 60357H <sup>1</sup> 60357V <sup>2</sup>

<sup>1</sup>HSN Option

<sup>2</sup>Viton Option

**NOTE<sub>1</sub>:** Tools listed are right-hand set / right-hand release.

**NOTE<sub>2</sub>:** Use of a Double Hook J-slot Packer is recommended when running with a pumpjack to help prevent the packer from unsetting during well production.

DIFFERENTIAL PRESSURE (MAX)	TENSILE LOAD THRU TOOL (MAX)
7,000 PSI	53,000 LBS

D & L OIL TOOLS  
P.O. BOX 52220 TULSA, OK 74152  
PHONE: (800) 441-350 [www.dloiltools.com](http://www.dloiltools.com)



# ASI-X PACKER 5-1/2" X 2-3/8"

Manual No:  
**DL-603-5500-003**

Revision: **K**

Revision Date:  
**07/20/2017**

Authored by: S. White

Approved by: D. Hushbeck

## D) PRE-INSTALLATION INSPECTION PROCEDURES

**CAUTION<sub>1</sub>:** D&L ships tool connections made-up **HAND TIGHT**—labeled with hand-tight tape on the tool (Fig. 1) — unless stated otherwise. Tighten/torque all connections properly before operating tool.



Fig. 1

GENERAL THREAD CONNECTION TORQUE RECOMMENDATIONS			
STUB ACME / ACME THREADS	INTERNAL TAPERED TUBING THREADS		PREMIUM THREADS
	UP TO 2-3/8"	GREATER THAN 2-3/8"	
600 – 800 FT-LBS	600 – 800 FT-LBS	800 – 1,200 FT-LBS	Consult thread manufacturer's recommendations.

GENERAL SCREW TORQUE RECOMMENDATIONS									
SCREW SIZE (INCHES)	#6	#8	#10	1/4	5/16	3/8	7/16	1/2	5/8 and larger
TORQUE RANGE (INCH-POUNDS)	5 – 8	10 – 15	18 – 25	25 – 40	50 – 80	90 – 135	160 – 210	250 – 330	450 – 650

Before first use, D&L recommends disassembly and inspection of the tools unless stated otherwise. Ensure parts have not been damaged during shipping. Replace damaged parts with D&L replacement parts. Contact D&L sales for replacement part information.

Before re-using the tool, D&L recommends disassembly and inspection of the tool. Clean parts and ensure parts are in good working condition. Replace worn or damaged parts with D&L replacement parts.

When redressing the tool, D&L recommends replacement of all seals, elements, o-rings, shear screws, etc. Contact D&L sales for redress kit and/or other part information.

## E) SETTING PROCEDURES

**CAUTION<sub>2</sub>:** Do not run the tool without properly tightening connections. Running the tool with loose connections may damage the tool and cause malfunction.

### E-1) COMPRESSION SET

Run the packer to setting depth. Pick up the work string to allow for setting stroke (12-13") plus desired work string load. Rotate the work string 1/4 right-hand turn at the packer, and then lower the work string while releasing torque. Slack off on the work string sufficient weight to set the packer (12,000 lbs). Pull tension to assure that the upper slips are set. The work string can then be left in tension, compression or neutral. If insufficient weight is available to set the packer with compression, tension can be applied after slack-off to pack off the elements.

### E-2) TENSION SET

Run to setting depth, pick up on the work string and rotate 1/4 turn to the right at the packer then lower the work string slacking off available weight to set the packer lower slips. Pull tension to set upper slips and pack off elements (12,000 lbs). After setting the packer, the work string can be left in compression, tension or neutral.



# ASI-X PACKER

## 5-1/2" X 2-3/8"

Manual No:  
**DL-603-5500-003**

Revision: **K**

Revision Date:  
**07/20/2017**

Authored by: S. White

Approved by: D. Hushbeck

### F) RELEASING PROCEDURES

The releasing procedures are the same whether the packer has been tension or compression set. Set down weight on the packer to unseat the J-pin from the tension shoulder of the J-slot. Refer to the Pressure Affected Area Guide to determine necessary set down weight on the packer. Rotate the work string 1/4 right-hand turn at the packer and pick up while holding right-hand torque. Weight in addition to pipe weight may be required to pick up on packer - refer to Pressure Affected Area Guide. The internal by-pass will open, allowing pressure to equalize. After pressure is equalized, continue to pick up to release the upper slips, relax the elements and release the lower slips thus allowing the packer to be re-set or removed from the well.

**CAUTION:** High differential pressure below the ASI-X may cause the upper slips to wedge in tighter, requiring an extra amount of tension to release the upper slips.

#### F-1) EMERGENCY RELEASE

In the event, the packer will not release in the normal manner, hard right-hand torque can be applied (800-1,000 Ft-lbs) which will break the tack weld on the J-pin ring. Continued rotation of approximately 15 turns will release the J-pin ring and allow the packer to be pulled. When released in this manner, the packer will reset when moved down the hole.

### G) STORAGE RECOMMENDATIONS

When preparing the tool for storage, follow the Pre-Installation Inspection Procedures. Re-assemble the tool with connections hand-tight only and in running position if applicable. Elements should be in a relaxed state—free from tension, compression, and other stresses that could cause deformation.

Store the tool, if possible, in an enclosed, temperature and humidity controlled environment. Avoid excessively high temperatures over long periods of time. Shield elastomeric parts from ultraviolet light sources. Keep tool dry and protected from condensation. Do not store in contact with or near volatile or corrosive chemicals. Do not store near ozone generating equipment or operations such as welding.

### H) PRESSURE AFFECTED AREA(S) GUIDE

When set downhole, the packer mandrel is subjected to a force created by differential pressure above or below the packer that acts on the pressure affected area (i.e., the piston effect). Depending on the tubing size and weight and the seal area of the packer the force created by differential pressure acts upwards or downwards on the packer mandrel. An upward force, designated as a negative (-) value, acts to push the packer mandrel up hole and must be accounted for to ensure that the packer remains set. A downward force, designated as a positive value, acts to push the packer mandrel down hole and must be accounted for when releasing the packer. Other factors (e.g., tubing movement due to temperature change) must be considered separately to determine all the forces acting on the packer.

PACKER SIZE (INCHES)	TUBING SIZE (INCHES)	PRESSURE (SQ. INCHES)	
		ABOVE	BELOW
5-1/2" X 2-3/8"	2.375	0.92 (DOWN)	-2.07 (UP)
	2.875	-1.15 (UP)	-0.67 (UP)

**Example:** Consider a 5-1/2" X 2-3/8" ASI-X Packer set on 2.375" tubing with a differential pressure of 3,000 PSI in the annulus around the tubing above the packer. What is the force acting on the seal area of the mandrel?

To calculate the force (lbs) acting on the seal area of the mandrel, refer to the Pressure Affected Area Guide for a 5-1/2" X 2-3/8" ASI-X Packer run on 2.375" tubing. In this example, the differential pressure from above the packer acts on the seal area of the packer mandrel across a pressure affected area of 0.92 in<sup>2</sup>. Multiplying the differential pressure (3,000 PSI) by the pressure affected area (0.92 in<sup>2</sup>) results in a force of 2,760 lbs. The piston effect on the packer mandrel is a downward force of 2,760 lbs.



# ASI-X PACKER

## 5-1/2" X 2-3/8"

Manual No:  
**DL-603-5500-003**

Revision: **K**

Revision Date:  
**07/20/2017**

Authored by: S. White

Approved by: D. Hushbeck

### I) ELASTOMER TRIM TEMPERATURE GUIDE

NITRILE (STD)			
TEMPERATURE RANGE (F°)	DUROMETER		
	END	MIDDLE	END
40° - 125°	80	70	80
125° - 250°	90	70	90
150° - 250°	90	80	90
250° +	Contact D&L Sales		

RUBBER TYPE	TEMPERATURE RANGE
NITRILE	40° - 250°F
HSN (HNBR)	70° - 300°F
VITON	100° - 350°F

### J) RECOMMENDED TOOLS

#### J-1) HAND TOOLS

- VISE
- GLOVES
- ALLEN WRENCHES
- TAPE MEASURE
- O-RING PICK
- BAR
  - 1/2-INCH
  - 3/4-INCH
- PAINT BRUSH, 2-INCH
- PIPE WRENCH, 3-FT (2 EA)
- "CHEATER" PIPE, 4-FT LONG
- ADJUSTABLE WRENCH, 12-INCH
- CORDLESS DRILL, 18V
- SNAP RING SPREADER PLIERS
- ALIGNING PUNCH
- SCREWDRIVER SET, FLAT-TIPPED
- SOCKET SETS
  - 3/8-INCH DRIVE
  - 1/2-INCH DRIVE
- HAMMERS
  - SLEDGE
  - BALL PEEN
  - DEAD BLOW

#### J-2) SPECIAL TOOLS

ITEM	QTY	DESCRIPTION	PART NUMBER
T1	1	DRAG BLOCK ASSEMBLY TOOL	AT055110

### K) DISASSEMBLY

K-1) Clamp top sub (1) in vise.

K-1.1) Unscrew and remove set screws (30) from J-pin bottom sub (23). Move J-body (20) as needed.

K-1.2) Unscrew and remove J-pin bottom sub (23) from inner mandrel (2).

**NOTE<sub>3</sub>:** Drag block body assembly must be free to rotate.

K-1.2.1) Remove o-ring (32) from J-pin bottom sub (23).

K-1.3) Compress drag blocks (22) with drag block assembly tool (T1).

K-1.4) Unscrew and remove set screws (28) from J-body (20).

K-1.5) Unscrew and remove J-body (20) from drag block body (18) (**NOTE<sub>4</sub>:** Left-hand threads).

K-1.6) Remove drag block retainer (21) from drag block body (18).

K-1.7) Release drag blocks (22). Remove drag blocks (22) and drag block springs (3) from drag block body (18).

K-1.8) Unscrew and remove rubber mandrel cap (19) from rubber mandrel (11).

**NOTE<sub>5</sub>:** For added leverage, insert a rod through rubber retainer (15) and rubber mandrel (11) as needed.

K-1.9) Wedge lower slips (17) outward (if needed). Remove drag block body assembly and disassemble:

K-1.9.1) Remove wedges (if needed). Remove lower slips (17) and lower slip springs (25) from drag block body (18).

K-1.10) Unscrew and remove lower cone (16) from rubber retainer (15).

K-1.11) Unscrew rubber mandrel (11) from center coupling (10).



# ASI-X PACKER

## 5-1/2" X 2-3/8"

Manual No:  
**DL-603-5500-003**

Revision: **K**

Revision Date:  
**07/20/2017**

Authored by: S. White

Approved by: D. Hushbeck

### K) DISASSEMBLY (cont'd)

K-1.12) Remove rubber mandrel assembly and disassemble:

K-1.12.1) Remove gage ring (29), elements (13, 14), rubber spacers (12) and rubber retainer (15) from rubber mandrel (11).

K-1.13) Unscrew and remove center coupling (10) from upper cone (9).

K-1.13.1) Remove bonded seal (24) and o-ring (33) from center coupling (10).

K-1.13.1.1) Remove o-ring (31) from bonded seal (24).

K-1.14) Remove upper cone (9) from inner mandrel (2).

K-2) Unclamp and remove top sub (1) from vise. Clamp lower part of inner mandrel (2) in vise.

**CAUTION<sub>4</sub>:** Do NOT wrench or clamp on seal surface.

K-2.1) Unscrew and remove spring cage cap (27) from spring cage (5).

**CAUTION<sub>5</sub>:** Compression spring (4) is compressed with spring tension against upper slip body assembly.

K-2.2) Unscrew and remove top sub (1) from inner mandrel (2).

K-2.3) Remove compression spring (4) from inner mandrel (2).

K-2.4) Unscrew and remove spring cage (5) from upper slip body (6).

K-2.5) Wedge releasing slip (7) and upper slips (8) outwards (if needed). Remove upper slip body assembly and disassemble:

K-2.5.1) Remove wedges (if needed). Remove releasing slip (7), upper slips (8) and upper slip springs (26) from upper slip body (6).

K-3) Unclamp and remove inner mandrel (2) from vise.

### L) ASSEMBLY

**NOTE<sub>6</sub>:** Clean and inspect all parts. Replace all worn and damaged parts. Install parts in proper order, and orientation and tighten/torque all connections properly.

**CAUTION<sub>6</sub>:** To ensure tool operates properly, install o-rings in o-ring grooves NOT thread relief (Fig. 2).

L-1) Clamp inner mandrel (2) in vise.

**CAUTION<sub>4</sub>:** Do NOT wrench or clamp on seal surface.

L-1.1) Assemble upper slip body assembly and install:

L-1.1.1) Install upper slips (8), releasing slip (7), and upper slip springs (26) into upper slip body (6).

**NOTE<sub>7</sub>:** Install two (2ea) springs per slip (Fig. 3).

L-1.1.2) Wedge releasing slip (7) and upper slips (8) outwards. Install upper slip body assembly onto inner mandrel (2). Remove wedges.

L-1.2) Screw spring cage (5) into upper slip body (6).

L-1.3) Install compression spring (4) into spring cage (5).

L-1.4) Screw top sub (1) onto inner mandrel (2).

L-1.5) Screw spring cage cap (27) onto spring cage (5).

**CAUTION<sub>5</sub>:** Compression spring (4) will be compressed with spring tension against upper slip body assembly.

L-2) Unclamp and remove inner mandrel (2) from vise. Clamp top sub (1) in vise.

L-2.1) Install upper cone (9) onto inner mandrel (2).

L-2.2) Install o-ring (33) in groove in center coupling (10).

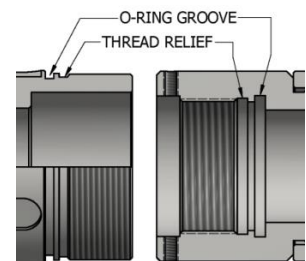


Fig. 2

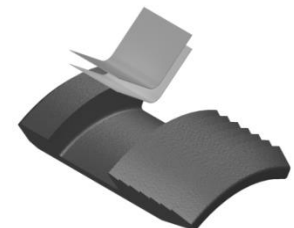


Fig. 3



# ASI-X PACKER

## 5-1/2" X 2-3/8"

Manual No:  
**DL-603-5500-003**

Revision: **K**

Revision Date:  
**07/20/2017**

Authored by: S. White

Approved by: D. Hushbeck

### L) ASSEMBLY (cont'd)

L-2.3) Install o-ring (31) in groove in bonded seal (24).

L-2.4) Install bonded seal (24) into center coupling (10).

**CAUTION<sub>6</sub>:** Do not rip or tear o-rings during installation.

L-2.5) Screw center coupling (10) onto upper cone (9).

L-2.6) Assemble rubber mandrel assembly and install:

L-2.6.1) Install rubber retainer (15), elements (13, 14), rubber spacers (12) and gage ring (29) onto rubber mandrel (11).

L-2.6.2) Install rubber mandrel assembly onto inner mandrel (2).

L-2.6.3) Screw rubber mandrel (11) into center coupling (10).

**CAUTION<sub>6</sub>:** Do not rip or tear o-ring during installation.

L-2.7) Screw lower cone (16) into rubber retainer (15).

L-2.8) Assemble drag block body assembly and install:

L-2.8.1) Install lower slips (17) and lower slip springs (25) into drag block body (18). Wedge slips outward.

**NOTE<sub>7</sub>:** Install two (2ea) springs per slip (Fig. 4).

L-2.8.2) Install drag block body assembly onto rubber mandrel (11).

L-2.9) Screw rubber mandrel cap (19) onto rubber mandrel (11).

L-2.10) Install drag blocks (22) and drag block springs (3) into drag block body (18). Compress drag blocks (22) using drag block body assembly tool (T1).

**NOTE<sub>8</sub>:** Install four (4ea) drag block springs per drag block (Fig. 5).

L-2.11) Install drag block retainer (21) onto drag block body (18) capturing ends of drag blocks (22).

L-2.12) Screw J-body (20) onto drag block body (18) (**NOTE<sub>4</sub>:** Left-hand threads).

L-2.13) Screw set screws (28) into J-body (20).

L-2.14) Release drag blocks (22).

L-2.15) Install o-ring (32) in groove in J-pin bottom sub (23).

L-2.16) Screw J-pin bottom sub (23) onto inner mandrel (2).

**NOTE<sub>3</sub>:** Drag block body assembly must be free to rotate.

**CAUTION<sub>6</sub>:** Do not rip or tear o-ring during installation.

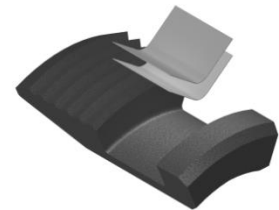


Fig. 4



Fig. 5

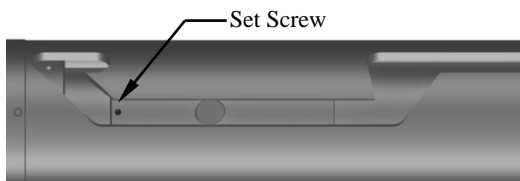


Fig. 6

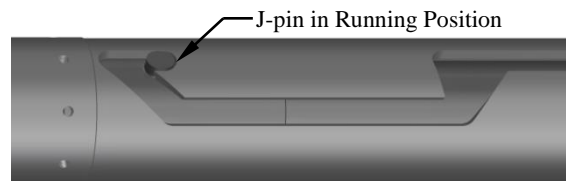


Fig. 7

L-2.17) Screw set screws (30) into J-pin bottom sub (23). Move J-body (20) as needed (Fig. 6).

L-2.18) Position J-pin in running position in J-slot of J-body (20) (Fig. 7).

L-3) Unclamp top sub (1) from vise and remove assembled tool.



# ASI-X PACKER

## 5-1/2" X 2-3/8"

Manual No:  
**DL-603-5500-003**

Revision: **K**

Revision Date:  
**07/20/2017**

Authored by: S. White

Approved by: D. Hushbeck

### M) PARTS LIST

ITEM	QTY	DESCRIPTION	MATERIAL	14.0 - 20.0# P/N 60355	20.0 – 23.0# P/N 60357
1	1	TOP SUB	DLMS80	60055610 (60155610*)	
2	1	INNER MANDREL	DLMS80	60355210	60357210
3	16	DRAG BLOCK SPRING	INCONEL	9100900	
4	1	COMPRESSION SPRING	DLMCRSP	60355920	
5	1	SPRING CAGE	DLMS60	60355310 (60155310*)	
6	1	UPPER SLIP BODY	DLMS60	60055320	
7	1	RELEASING SLIP	DLMS110	60055125	
8	2	UPPER SLIP	DLMS35	60055115	
9	1	UPPER CONE	DLMS60	60355410	
10	1	CENTER COUPLING	DLMS80	60355620	
11	1	RUBBER MANDREL	DLMS60	60055220	60057220
12	2	RUBBER SPACER	DLMS60	60255840	60257840
13	1	ELEMENT	70 DURO NITRILE	60255511	60257511
14	2	ELEMENT	90 DURO NITRILE	60255513	60257513
15	1	RUBBER RETAINER	DLMS80	60255850	60257850
16	1	LOWER CONE	DLMS60	60055420	
17	4	LOWER SLIP	DLMS60	60055135	
18	1	DRAG BLOCK BODY	DLMS35	60055335	60057335
19	1	RUBBER MANDREL CAP	DLMS60	60055230 (60155230*)	
20	1	J-BODY	DLMS80	60355340 (60155340*)	
21	1	DRAG BLOCK RETAINER	DLMS60	60055910	60057910
22	4	DRAG BLOCK	DLMSDB8	9055900	9045900
23	1	J-PIN BOTTOM SUB	DLMS110 / DLMS60	60355650	
24	1	BONDED SEAL	DLMS60 / 90 DURO NITRILE	60055520	
25	8	LOWER SLIP SPRING	ELGILOY	7155901	
26	6	UPPER SLIP SPRING	ELGILOY	7155902	
27	1	SPRING CAGE CAP	DLMS60	60055810 (60155810*)	60057810 (60157810*)
28	4	SET SCREW 5/16-18 UNC X 1/2	STEEL	SSS031C050	
29	1	GAGE RING	DLMS60	60255830	60257830
30	2	SET SCREW 1/4-20 UNC X 3/8	STEEL	SSS025C037	
31	1	149 O-RING	90 DURO NITRILE	90149	



# ASI-X PACKER

## 5-1/2" X 2-3/8"

Manual No:  
**DL-603-5500-003**

Revision: **K**

Revision Date:  
**07/20/2017**

Authored by: S. White

Approved by: D. Hushbeck

### M) PARTS LIST (cont'd)

ITEM	QTY	DESCRIPTION	MATERIAL	14.0 - 20.0# P/N 60355	20.0 - 23.0# P/N 60357
32	1	228 O-RING	90 DURO NITRILE	90228	
33	1	234 O-RING	90 DURO NITRILE	90234	
		REDRESS KIT (RDK)		60355050	60357050
		ASSEMBLED WEIGHT		194 LBS	188 LBS

\*P/N may be substituted

#### M-1) ELASTOMER TRIM OPTIONS

**NOTE:** For temperature range, refer to Elastomer Trim Temperature Guide.

##### M-1.1) HSN

ITEM	QTY	DESCRIPTION	MATERIAL	14.0 - 20.0# P/N 60355H	20.0 - 23.0# P/N 60357H
13	1	ELEMENT	70 DURO HSN	60255511H	60257511H
14	2	ELEMENT	90 DURO HSN	60255513H	60257513H
24	1	BONDED SEAL	90 DURO HSN	60055520H	
31	1	149 O-RING	90 DURO HSN	90149H	
32	1	228 O-RING	90 DURO HSN	90228H	
33	1	234 O-RING	90 DURO HSN	90234H	

REDRESS KIT (RDK)		60355050H	60357050H
-------------------	--	-----------	-----------

##### M-1.2) VITON

ITEM	QTY	DESCRIPTION	MATERIAL	14.0 - 20.0# P/N 60355V	20.0 - 23.0# P/N 60357V
13	1	ELEMENT	70 DURO VITON	60255511V	60257511V
14	2	ELEMENT	90 DURO VITON	60255513V	60257513V
24	1	BONDED SEAL	90 DURO VITON	60055520V	
31	1	149 O-RING	90 DURO VITON	90149V	
32	1	228 O-RING	90 DURO VITON	90228V	
33	1	234 O-RING	90 DURO VITON	90234V	

REDRESS KIT (RDK)		60355050V	60357050V
-------------------	--	-----------	-----------



# ASI-X PACKER

5-1/2" X 2-3/8"

Manual No:  
**DL-603-5500-003**

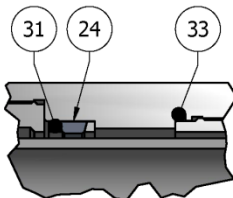
Revision: **K**

Revision Date:  
**07/20/2017**

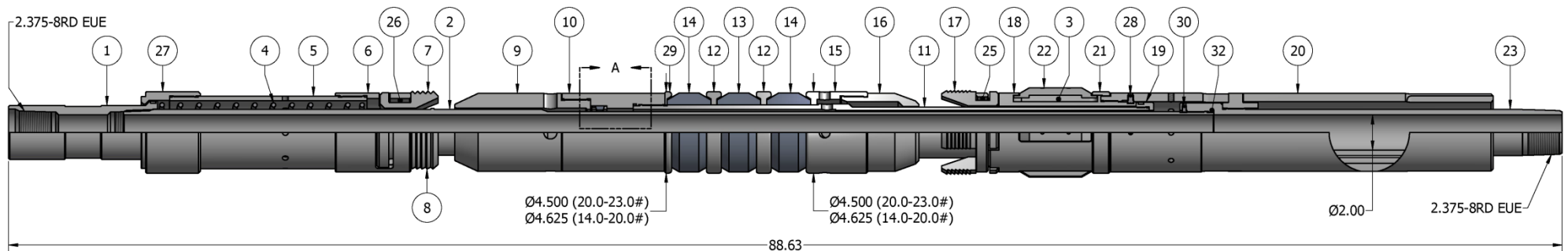
Authored by: S. White


Approved by: D. Hushbeck

## N) TECHNICAL ILLUSTRATION



DETAIL A



	<h1>ASI-X PACKER</h1> <h2>5-1/2" X 2-3/8"</h2>	Manual No: <b>DL-603-5500-003</b>
		Revision: <b>K</b>
		Revision Date: <b>07/20/2017</b>
<i>Authored by: S. White</i>		<i>Approved by: D. Hushbeck</i>

## O) REVISION HISTORY

DATE	REVISION	DESCRIPTION OF CHANGES	REVISED BY	APPROVED BY
07/20/2017	K	Revised P/N 60355 recommended hole size was 4.778" – 5.012", Elastomer Trim Temperature Guide temp. ratings; Added General Screw Torque Recommendations	J.Anderson	J.Johnson
04/28/15	J	Added Related Tools, tool drift ID, Pre-Installation Inspection and Storage Procedures; Revised Pressure Affected Area Guide, P/N AT055110 was DBAT55, P/N 60155610 material was 1026	J.Anderson	K.Riggs
07/24/13	H	Revised Assembly Tool P/N DBAT55 was AT055110; Added Note for substitute parts.	S. McEntire	D. Hushbeck
06/06/13	G	Revised P/N 60155610 was 60055610, 60155310 was 60355310, 60155230 was 60055230, 60155340 was 60355340, 60155810 was 60055810, 60157810 was 60057810, P/N 60355 assembled weight was 196 lbs, P/N 60357 assembled weight was 191 lbs; Added HSN and Viton options (60355H, 60355V, 60357H, 60357V), note for use of double hook J-slot packers, recommended tools, revision history; Removed AFLAS from element selection guide.	J. Anderson	J. McArthur