

## SNAPSET I PACKER

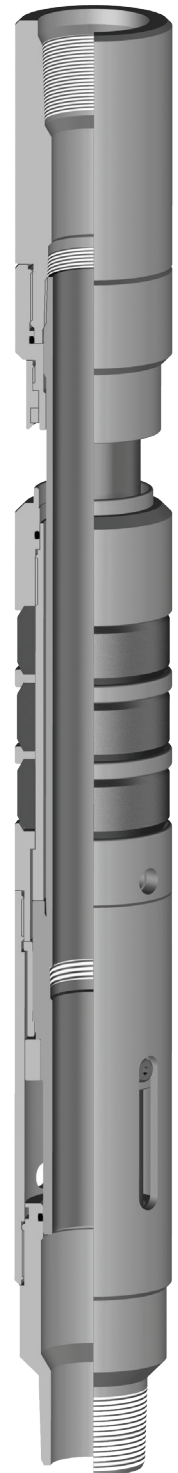
The **Snapset I Packer** is a compression set packer requiring only straight set down weight to pack-off. This packer is run above other packers (such as the ASI-X Packer, AS-II Packer or AS-III Packer) for selective production to isolate casing holes and perforations.

This packer has no upper or lower slips and should be used only where intermediate differential pressures from below are expected. This packer has an internal

latch to prevent the packer from setting prematurely when running down the hole. When releasing, the latch re-engages to allow movement downhole and re-setting.

### Special Features

- Large internal by-pass
- Set down to pack off, pick up to release
- Compact design



### Product Specifications

Casing		Recommended Hole Size (inches)	Tool OD (inches)	Tool ID (inches)	Thread Connections Box Up / Pin Down	Part Number
Size (inches)	Weight (lbs/ft)					
3-1/2	7.7 - 10.2	2.922 - 3.068	2.781	1.25	1.900 NUE	63535
4-1/2	9.5 - 13.5	3.920 - 4.090	3.750	1.94	2-3/8 EUE	63545
5-1/2	14.0 - 20.0	4.778 - 5.012	4.625	2.00	2-3/8 EUE	63555
				2.38	2-7/8 EUE	63556
	20.0 - 23.0	4.670 - 4.778	4.500	2.00	2-3/8 EUE	63557
				2.38	2-7/8 EUE	63558
7	17.0 - 26.0	6.276 - 6.538	6.000	2.50	2-7/8 EUE	63572
	26.0 - 32.0	6.094 - 6.276	5.875	2.50	2-7/8 EUE	63570
7-5/8	24.0 - 29.7	6.875 - 7.025	6.672	2.50	2-7/8 EUE	63575
9-5/8	43.5 - 53.5	8.535 - 8.755	8.250	3.00	3-1/2 EUE	63595-BAE

**NOTE:** All pricing includes standard Nitrile trim. Other sizes and connections available upon request.