

DL TENSION & DL SHEAR TENSION PACKER

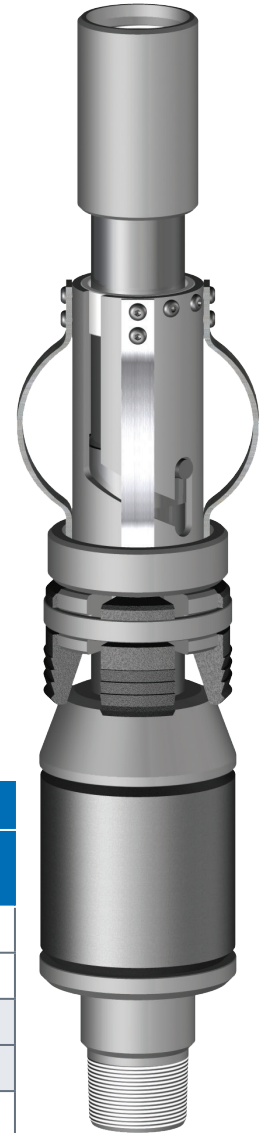
The **DL Tension Packer** and **DL Shear Tension Packer** are economical, compact tools for injection, pumping, medium range treating and production applications. These packers are set by 1/4 right-hand rotation of the tubing and then pull tension. To release these packers, slack off the tubing and the packer will automatically re-jay into the release position. These packers have a right-hand rotation release allowing retrieval of the tubing string.

The DL Tension Packer can be run in tension or compression. When the DL Tension Packer is run in compression, the right-hand release option cannot be utilized.

The DL Shear Tension Packer features an adjustable straight pull safety shear release. This packer is not designed to be run in compression.

Special Features

- Long element for increased pack-off
- Rotational safety tubing release
- Safety shear release (DL Shear Tension Packer Only)
- Deep wickered slips



Product Specifications

Casing		Recommended Hole Size (inches)	Tool OD (inches)	Tool ID (inches)	Thread Connections Box Up / Pin Down	Part Number	
Size (inches)	Weight (lbs/ft)					DL Tension	DL Shear Tension
2-7/8	6.4 - 6.5	2.375 - 2.441	2.250	0.75	3/4" LINE PIPE / 1.315 NUE	40125	41225
				1.13	1.315 EUE	40127	41227
3-1/2	7.7 - 10.2	2.922 - 3.068	2.781	1.50	1.900 EUE	40135	41235
	12.8	2.764	2.437	1.25	1.900 EUE / 1.900 NUE	40136	41236
4	9.5 - 11.0	3.476 - 3.548	3.250	1.50	2-3/8 EUE	40140	41240
				1.88	2-3/8 EUE	40141	41241
	14.8	3.240	3.090	1.50	1.900 EUE	40139	41239
4-1/2	9.5 - 13.5	3.920 - 4.090	3.750	1.94	2-3/8 EUE	40145	41245
	12.6	3.958	3.187	1.50	2-3/8 EUE	40142	41242
	15.1	3.826	3.656	1.94	2-3/8 EUE	40143	41243
	15.1 - 16.6	3.754 - 3.826	3.500	1.94	2-3/8 EUE	40144	41244
5	11.5 - 18.0	4.276 - 4.560	4.125	1.94	2-3/8 EUE	40150	41250

NOTE: All pricing includes standard Nitrile trim. Other sizes and connections available upon request.

DL Tension & DL Shear Tension Packer Product Specifications (continued)

Casing		Recommended Hole Size (inches)	Tool OD (inches)	Tool ID (inches)	Thread Connections Box Up / Pin Down	Part Number	
Size (inches)	Weight (lbs/ft)					DL Tension	DL Shear Tension
5-1/2	13.0 - 20.0	4.778 - 5.044	4.625	1.94	2-3/8 EUE	40155	41255
				2.44	2-7/8 EUE	40156	41256
	20.0 - 23.0	4.670 - 4.778	4.500	1.94	2-3/8 EUE	40157	41257
				2.44	2-7/8 EUE	40158	41258
6	15.0 - 20.0	5.352 - 5.524	5.125	2.44	2-7/8 EUE	40161	41261
	20.0 - 23.0	5.240 - 5.352	5.000	2.44	2-7/8 EUE	40160	41260
6-5/8	17.0 - 24.0	5.921 - 6.135	5.750	2.44	2-7/8 EUE	40166	41266
	20.0 - 28.0	5.791 - 6.049	5.625	2.44	2-7/8 EUE	40164	41264
	24.0 - 32.0	5.675 - 5.921	5.500	2.44	2-7/8 EUE	40165	41265
7	17.0 - 29.0	6.184 - 6.538	6.000	2.44	2-7/8 EUE	40170	41270
				3.00	3-1/2 EUE	40173	41273
7-5/8	20.0 - 33.7	6.765 - 7.125	6.625	2.44	2-7/8 EUE	40175	41275
				3.00	3-1/2 EUE	40176	41276
8-5/8	20.0 - 28.0	8.017 - 8.191	7.750	2.50	2-7/8 EUE	40186	41286
				3.00	3-1/2 EUE	40188	41288
	24.0 - 40.0	7.725 - 8.097	7.500	2.50	2-7/8 EUE	40185	41285
				3.00	3-1/2 EUE	40187	41287
9-5/8	32.3 - 43.5	8.755 - 9.001	8.500	2.50	2-7/8 EUE	40195	41299-XBAC
				3.00	3-1/2 EUE	40197	41299-XBAE
				4.00	4-1/2 LTC	40199	41299
	43.5 - 53.5	8.535 - 8.755	8.250	2.50	2-7/8 EUE	40194	41298-XBAC
				3.00	3-1/2 EUE	40196	41298-XBAE
				4.00	4-1/2 LTC	40198	41298
10-3/4	32.75 - 55.5	9.760 - 10.192	9.500	4.00	4-1/2 EUE	40110	41210
11-3/4	38.0 - 66.7	10.656 - 11.150	10.375	2.50	2-7/8 EUE	40111	41211
12-3/4	43.0 - 65.42	11.750 - 12.130	11.590	4.00	4-1/2 EUE	-	41212
13-3/8	48.0 - 72.0	12.347 - 12.715	12.000	4.00	4-1/2 EUE	40113	41213

NOTE: All pricing includes standard Nitrile trim. Other sizes and connections available upon request.