

CR BRIDGE PLUG

The **CR Bridge Plug** provides the end user with tools that will consistently contain well pressures at elevated temperatures and pressures. This plug permits faster removal from the well with either rotary or cable tool methods due to its compact size and the selection of high quality construction material.

The short, compact, interlocked construction assures the user that the CR Bridge Plug will provide faster, safer run-in, dependable set and pack-off and hold pressure that is safe for the casing weight and grade. The interlock construction and compact size requires minimal material removal during drill out. The outside diameter of these products has been held to a minimum to provide maximum tool-to-casing clearance for

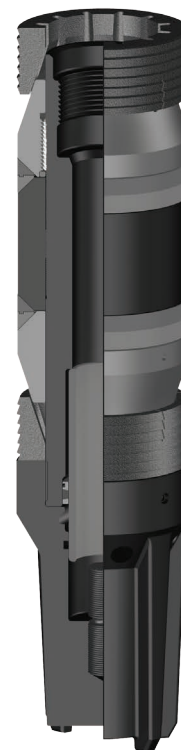
safe running and maximum fluid by-pass area during displacement procedures even in heavy mud systems.

A Wireline Adapter Kit (WLAK) and Hydraulic Setting Tool are used for setting CR Bridge Plugs.

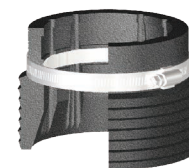
NOTE: The CR Bridge Plug is designed to provide a temporary wellbore seal. For a permanent wellbore seal, cement must be set on top of the plug.

Special Features

- Convertible to Cement Retainer
- Sets on wireline or on tubing with mechanical setting tool



Wireline Set
Cement Retainer



Mechanical
Slip Kit

Product Specifications

Casing		Recommended Hole Size (inches)	Tool OD (inches)	Part Number	
Size (inches)	Weight (lbs/ft)			Mechanical Set	Wireline Set
4-1/2	9.5 - 15.1	3.826 - 4.090	3.612	84245MS	84245WS
5	11.5 - 18.0	4.276 - 4.560	3.937	84250MS	84250WS
5-1/2	14.0 - 23.0	4.670 - 5.012	4.315	84255MS	84255WS
6-5/8	17.0 - 32.0	5.675 - 6.135	5.375	84265MS	84265WS
7	17.0 - 35.0	6.004 - 6.538	5.680	84270MS	84270WS
7-5/8	20.0 - 39.0	6.625 - 7.125	6.313	84275MS	84275WS
8-5/8	24.0 - 52.0	7.435 - 8.097	7.125	84285MS	84285WS
9-5/8	29.3 - 58.4	8.435 - 9.063	8.125	84295MS	84295WS
10-3/4	32.75 - 60.7	9.660 - 10.192	9.437	84210MS	84210WS
11-3/4	38.0 - 60.0	10.772 - 11.150	10.437	84211MS	84211WS
13-3/8	48.0 - 72.0	12.347 - 12.715	12.000	84213MS	84213WS

OPTIONS: MS (Mechanical Set), WS (Wireline Set)

NOTE¹: Conversion Kits are available for converting either way.

NOTE²: All pricing includes standard Nitrile trim. Other sizes and connections available upon request.