



**AS RETRIEVABLE BRIDGE PLUG  
RIGHT-HAND SET / RELEASE  
11-3/4", HEAVY DUTY MANDREL, NC 50  
TOOL JOINT**

Manual No: <b>DL-725-11750-1650</b>
Revision: <b>A</b>
Revision Date: <b>02/15/2023</b>

Authored by: J.Anderson

Approved by: E.Visaez

**A) DESCRIPTION**

The AS Retrievable Bridge Plug is a high pressure plug for multiple zone and selective single zone operations such as acidizing, fracturing, cementing, and testing. It features a large internal by-pass to reduce swabbing when running and retrieving. The by-pass closes during the setting of the plug and opens prior to releasing the upper slips to equalize pressure when unsetting. The by-pass is located directly below the upper slips to help wash debris when the by-pass is open.

This tool can be set in tension and compression. It can be set shallow in unsupported casing to contain pressure while working on wellhead equipment. It can be set in tension making it ideal for setting shallow to test wellhead equipment and also deep, high pressure wells.

The ASW Retrievable Bridge Plug is a version of the AS Retrievable Bridge Plug that allows the plug to be set on wireline or with a hydraulic setting tool, and retrieved with tubing. It cannot be reset in the wellbore once it is unset, but it can be pulled, re-dressed and run again. A Wireline Adapter Kit is required for this version.

**CAUTION<sub>1</sub>:** When running this tool with a packer, make sure the J-slots in the plug, running/ retrieving tool, and packer are all compatible.

**B) RELATED TOOLS** (sold separately)

B-1) 11-3/4" X 4-1/2" Spring Loaded Retrieving Tool, Safety Pin, Heavy Duty Spring, NC 50 Tool Joint (P/N 57711-3-XBEE) - refer to Technical Manual *DL-577-11750-1125*.

**C) SPECIFICATION GUIDE**

CASING			GAGE OD (INCHES)	THREAD CONNECTION PIN DOWN	PART NUMBER
SIZE (INCHES)	WEIGHT (LBS/FT)	RECOMMENDED HOLE SIZE (INCHES)			
11-3/4	42.0 – 71.0	10.586 – 11.084	10.375 10.500*	NC 50 TOOL JOINT	72511RR3-XBEE 72511RR3H-XBEE <sup>1</sup> 72511RR3V-XBEE <sup>2</sup>

\*Maximum OD across retracted drag blocks.

Elastomer Trim Options: <sup>1</sup>HSN, <sup>2</sup>Viton

**NOTE<sub>1</sub>:** Tools listed are right-hand set / right-hand release. Additional J-slot designs are available.

DIFFERENTIAL PRESSURE (MAX)	TENSILE LOAD THRU TOOL (MAX)	HANGING WEIGHT ON SET TOOL (MAX)	TORQUE THRU TOOL (MAX)
6,000 PSI	106,200 LBS	106,200 LBS <sup>†</sup>	7,700 FT-LBS

<sup>†</sup>Casing must be cemented for this load rating.

**D & L OIL TOOLS**  
P.O. BOX 52220 TULSA, OK 74152  
PHONE: (800) 441-3504 [www.dloilttools.com](http://www.dloilttools.com)



**AS RETRIEVABLE BRIDGE PLUG  
RIGHT-HAND SET / RELEASE  
11-3/4", HEAVY DUTY MANDREL, NC 50  
TOOL JOINT**

Manual No:  
**DL-725-11750-1650**

Revision: **A**

Revision Date:  
**02/15/2023**

Authored by: J.Anderson

Approved by: E.Visaez

**D) PRE-INSTALLATION INSPECTION PROCEDURES**

**CAUTION2:** D&L ships tool connections made-up **HAND TIGHT** – labeled with hand-tight tape on the tool (Fig. 1) – unless stated otherwise. Tighten/torque all connections properly before operating tool.



GENERAL THREAD CONNECTION TORQUE RECOMMENDATIONS			
STUB ACME / ACME THREADS	INTERNAL TAPERED TUBING THREADS		PREMIUM THREADS
	UP TO 2-3/8"	GREATER THAN 2-3/8"	
600 – 800 FT-LBS	600 – 800 FT-LBS	800 – 1,200 FT-LBS	Consult thread manufacturer's recommendations.

GENERAL SCREW TORQUE RECOMMENDATIONS									
SCREW SIZE (INCHES)	#6	#8	#10	1/4	5/16	3/8	7/16	1/2	5/8 and larger
TORQUE RANGE (INCH-POUNDS)	5 – 8	10 – 15	18 – 25	25 – 40	50 – 80	90 – 135	160 – 210	250 – 330	450 - 650

Before first use, D&L recommends disassembly and inspection of the tool unless stated otherwise. Ensure parts have not been damaged during shipping. Replace damaged parts with D&L replacement parts. Contact D&L sales for replacement part information.

Re-assemble the tool after inspection. Install parts in the correct order and orientation. Properly tighten connections.

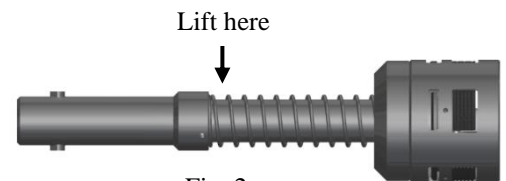
Before re-using the tool, D&L recommends disassembly and inspection of the tool. Clean parts and ensure parts are in good working condition. Replace worn or damaged parts with D&L replacement parts.

When redressing the tool, D&L recommends replacement of all seals, elements, o-rings, shear screws, etc. Contact D&L sales for redress kit and/or other replacement part information.

**E) SETTING PROCEDURES**

**CAUTION3:** Do not run the tool without properly tightening connections. Running the tool with loose connections may damage the tool and cause malfunction.

**CAUTION4:** Lift the AS Retrievable Bridge Plug by placing the sling or chain just below the pulling head. **DO NOT** lift the bridge plug by the upper slip body assembly (Fig. 2).



**E-1) TENSION SET**

Run to setting depth while latched to its spring loaded retrieving tool. Pick up, rotate 1/4 turn to the right at the plug, and lower work string to set lower slips. Pull tension to pack-off elements, slack off, and then pick up again to assure plug setting (24,000 lbs minimum). After setting plug, slack off work string weight, hold left-hand torque and pick up to free tubing from plug.

**E-2) COMPRESSION SET**

Run to setting depth while latched to its spring-loaded retrieving tool. Pick up, rotate 1/4 turn to the right at the plug, and lower work string to set lower slips. Slack off sufficient weight to pack-off elements, then pick up to firmly set upper slips and slack off again (24,000 lbs minimum). After setting plug, slack off work string weight, hold left-hand torque and pick up the free tubing from plug.



**AS RETRIEVABLE BRIDGE PLUG  
RIGHT-HAND SET / RELEASE  
11-3/4", HEAVY DUTY MANDREL, NC 50  
TOOL JOINT**

Manual No: <b>DL-725-11750-1650</b>
Revision: <b>A</b>
Revision Date: <b>02/15/2023</b>

Authored by: J.Anderson

Approved by: E.Visaez

**F) RELEASING PROCEDURES**

Lower work string until the retrieving tool automatically latches to the AS Retrievable Bridge Plug. Sand may be washed from the upper slip by circulating through the upper portion of the plug. Slack off weight, hold right-hand torque pick up to open the by-pass valve, and wait until differential pressure has equalized. Continue upward movement to release upper slips, relax packing elements and re-latch. The plug may now be removed or re-located.

**F-1) EMERGENCY RELEASE**

If the plug will not release conventionally, slack off re-set, then pick straight up to shear J-pins and release the plug (standard J-pins will shear at 50,000 lbs each – refer to Parts List for J-pins with other shear values) Once the J-pins are sheared, the tool cannot be moved down hole.

**NOTE<sub>2</sub>:** Contact D&L Engineering if running tool equipped with lower than standard value shear J-pins.

**G) STORAGE RECOMMENDATIONS**

When preparing the tool for storage, follow the Pre-Installation Inspection Procedures. Re-assemble the tool with connections hand-tight only and in running position if applicable. Elements should be in a relaxed state—free from tension, compression, and other stresses that could cause deformation.

Store the tool, if possible, in an enclosed, temperature and humidity controlled environment. Avoid excessively high temperatures over long periods of time. Shield elastomeric parts from ultraviolet light sources. Keep tool dry and protected from condensation. Do not store in contact with or near volatile or corrosive chemicals. Do not store near ozone generating equipment or operations such as welding.

**H) PRESSURE AFFECTED AREA GUIDE**

When set downhole, the packer mandrel is subjected to a force created by differential pressure above or below the packer that acts on the pressure affected area (i.e., the piston effect). Depending on the tubing size and weight and the seal area of the packer the force created by differential pressure acts upwards or downwards on the packer mandrel. An upward force, designated as a negative (-) value, acts to push the packer mandrel up hole and must be accounted for when releasing the packer. A downward force, designated as a positive value, acts to push the packer mandrel down hole and must be accounted for when releasing the packer. Other factors (e.g., tubing movement due to temperature change) must be considered separately to determine all the forces acting on the packer.

PACKER SIZE (INCHES)	PRESSURE AFFECTED AREA (SQ. INCHES)	
	ABOVE	BELOW
11-3/4	8.296 (DOWN)	-8.296 (UP)

**Example:** Consider a 11-3/4" AS Bridge Plug set on tubing with a differential pressure of 3,000 psi in the annulus around the tubing above the packer. What is the force acting on the seal area of the mandrel?

To calculate the force (lbs) acting on the seal area of the mandrel, refer to the Pressure Affected Area Guide for a 11-3/4" AS Bridge Plug. In this example, the differential pressure from above the packer acts on the seal area of the packer mandrel across a pressure affected area of 8.296 in<sup>2</sup>. Multiplying the differential pressure (3,000 psi) by the pressure affected area (8.296 in<sup>2</sup>) results in a force of 24,888 lbs. The piston effect on the packer mandrel is a downward force of 24,888 lbs.



**AS RETRIEVABLE BRIDGE PLUG  
RIGHT-HAND SET / RELEASE  
11-3/4", HEAVY DUTY MANDREL, NC 50  
TOOL JOINT**

Manual No:  
**DL-725-11750-1650**

Revision: **A**

Revision Date:  
**02/15/2023**

Authored by: J.Anderson

Approved by: E.Visaez

**I) ELASTOMER TRIM TEMPERATURE GUIDE**

NITRILE (STD)			
TEMPERATURE RANGE (F°)	DUROMETER		
	END	MIDDLE	END
40° - 125°	80	70	80
125° - 250°	90	70	90
150° - 250°	90	80	90
250° +	Contact D&L Sales		

RUBBER TYPE	TEMPERATURE RANGE
NITRILE	40° - 250°F
HSN (HNBR)	70° - 300°F
VITON	100° - 350°F

**J) RECOMMENDED TOOLS**

**J-1) HAND TOOLS**

- VISE
- GLOVES
- ALLEN WRENCHES
- TAPE MEASURE
- O-RING PICK
- BAR
  - 1/2-INCH
  - 3/4-INCH
- PAINT BRUSH, 2-INCH
- PIPE WRENCH, 4-FT (2 EA)
- "CHEATER" PIPE, 4-FT LONG
- ADJUSTABLE WRENCH, 12-INCH
- CORDLESS DRILL, 18V
- SNAP RING SPREADER PLIERS
- ALIGNING PUNCH
- SCREWDRIVER SET, FLAT-TIPPED
- SOCKET SETS
  - 3/8-INCH DRIVE
  - 1/2-INCH DRIVE
- HAMMERS
  - SLEDGE
  - BALL PEEN
  - DEAD BLOW
- JACK STANDS

**J-2) SPECIAL TOOLS**

ITEM	QTY	DESCRIPTION	PART NUMBER
T1	1	DRAG BLOCK ASSEMBLY TOOL	AT010110

**K) DISASSEMBLY**

**NOTE3:** Ensure vise is capable of handling weight of tool.

**NOTE4:** Support tool during disassembly with jack stands as necessary.

K-1) Clamp upper cone (9) in vise.

**NOTE5:** If needed, align hole in upper cone (9) with slot in sealing mandrel (27) and insert punch (or other tool) to prevent tool components from rotating during disassembly.

K-1.1) Unscrew and remove set screws (41) from bottom sub (37)

K-1.2) Unscrew and remove bottom sub (37) from J-slot mandrel (20).

K-1.2.1) Remove o-ring (48) from bottom sub (37).

K-1.3) Unscrew and remove set screws (41) from body extension (28).

K-1.4) Unscrew and separate body extension (28) from J-pin body (23) (**NOTE6:** Left-hand threads).

**NOTE7:** Drag block body assembly must be free to rotate.

K-1.5) Remove J-pins (35) from J-pin body (23).

K-1.6) Remove J-pin body (23) from J-slot mandrel (20).

K-1.7) Compress drag blocks (22) with drag block assembly tool (T1). Unscrew and remove set screws (42) from drag block body (18). Rotate drag block retainer (21) as needed to access set screws (42).



**AS RETRIEVABLE BRIDGE PLUG  
RIGHT-HAND SET / RELEASE  
11-3/4", HEAVY DUTY MANDREL, NC 50  
TOOL JOINT**

Manual No:  
**DL-725-11750-1650**

Revision: **A**

Revision Date:  
**02/15/2023**

Authored by: J.Anderson

Approved by: E.Visaez

**K) DISASSEMBLY (cont'd)**

- K-1.8) Unscrew drag block body (18) from drag block body adapter (31) (**NOTE**: Left-hand threads). Move drag block body assembly up temporarily.
- K-1.9) Unscrew and remove set screws (38) from drag block body adapter (31).
- K-1.10) Unscrew and remove body extension (28) from drag block body adapter (31) (**NOTE**: Left-hand threads).
- K-1.11) Unscrew and remove rubber mandrel cap (19) from lower rubber mandrel (34).
- K-1.12) Remove drag block body adapter (31) from lower rubber mandrel (34).
- K-1.13) Remove drag block retainer (21) from drag block body (18).
- K-1.14) Release drag blocks (22). Remove drag blocks (22) and drag block springs (3) from drag block body (18).
- K-1.15) Remove drag block body assembly and disassemble:
  - K-1.15.1) Wedge lower slips (17) outward (if needed). Unscrew and remove cap screws (43) from drag block body (18).
  - K-1.15.2) Remove lower slip support (32) from drag block body (18).
  - K-1.15.3) Remove wedges (if needed). Remove lower slips (17) and lower slip springs (25) from drag block body (18).
- K-1.16) Unscrew and remove lower cone assembly (16) from rubber retainer (15).
- K-1.17) Unscrew and remove set screws (40) from lower rubber mandrel (34).
- K-1.18) Unscrew and remove lower rubber mandrel (34) from rubber mandrel (11).
- K-1.19) Unscrew and remove set screws (40) from J-slot mandrel (20).
- K-1.20) Unscrew and remove J-slot mandrel (20) from sealing mandrel (27).
- K-1.21) Unscrew rubber mandrel (11) from center coupling (10).
- K-1.22) Remove rubber mandrel assembly and disassemble:
  - K-1.22.1) Remove elements (13, 14), rubber spacers (12) and rubber retainer (15) from secondary rubber mandrel (36).
  - K-1.22.2) Remove secondary rubber mandrel (36) from rubber mandrel (11).
  - K-1.22.3) Remove o-ring (47) from rubber mandrel (11).
- K-1.23) Unscrew and remove gage ring (29) from center coupling (10).
- K-1.24) Moving to upper end of tool, unscrew and remove set screws (41) from pulling head (1).
- K-1.25) Unscrew and remove pulling head (1) from upper mandrel (2).

**CAUTIONS:** Compression spring (4) is compressed with spring tension against pulling head (1).
- K-1.26) Remove compression spring (4) from upper mandrel (2).
- K-1.27) Remove upper slip body assembly and disassemble:
  - K-1.27.1) Wedge releasing slips (7) and upper slips (8) outward (if needed). Unscrew and remove upper slip support (33) from upper slip body (6).
  - K-1.27.2) Remove wedges (if needed). Remove releasing slips (7), upper slips (8) and upper slip springs (26) from upper slip body (6).
- K-1.28) Unscrew and remove set screws (40) from upper mandrel (2).
- K-1.29) Unscrew and remove upper mandrel (2) from sealing mandrel (27).
- K-1.30) Remove plug (5) from sealing mandrel (27).
  - K-1.30.1) Remove o-ring (45) from plug (5).
- K-1.31) Remove sealing mandrel (27) from upper cone (9).
- K-1.32) Unscrew and remove set screws (39) from upper cone (9).
- K-1.33) Unscrew and remove center coupling (10) from upper cone (9).



**AS RETRIEVABLE BRIDGE PLUG  
RIGHT-HAND SET / RELEASE  
11-3/4", HEAVY DUTY MANDREL, NC 50  
TOOL JOINT**

Manual No:  
**DL-725-11750-1650**

Revision: **A**

Revision Date:  
**02/15/2023**

Authored by: J.Anderson

Approved by: E.Visaez

### K) DISASSEMBLY (cont'd)

K-1.33.1) Remove bonded seals (24) from center coupling (10).

K-1.33.1.1) Remove o-rings (44) from bonded seals (24).

K-1.33.2) Remove o-ring (46) from center coupling (10).

K-2) Unclamp and remove upper cone (9) from vise.

K-2.1) Remove seal retaining ring (30) from upper cone (9).

**NOTE8:** To redress tool assembly, follow disassembly instructions. It is recommended by D&L Oil Tools to replace all seals, elements, o-rings, shear screws, etc. when redressing tool.

### L) ASSEMBLY

**NOTE3:** Ensure vise is capable of handling weight of tool.

**NOTE4:** Support tool during disassembly with jack stands as necessary.

**NOTE9:** Clean and inspect all parts. Replace all worn and damaged parts. Install parts in proper order, orientation and tighten/torque all connections properly.

**CAUTION6:** To ensure tool operates properly, install o-rings in o-ring grooves NOT thread reliefs (Fig. 3).

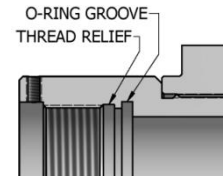


Fig. 3

L-1) Clamp upper cone (9) in vise.

L-1.1) Install seal retaining ring (30) into upper cone (9).

L-1.2) Install o-ring (46) in o-ring groove in center coupling (10).

L-1.3) Install o-rings (44) in o-ring grooves in bonded seals (24).

L-1.4) Install bonded seals (24) in center coupling (10).

**CAUTION7:** Do not rip or tear o-rings during installation.

L-1.5) Screw center coupling (10) into upper cone (9).

L-1.6) Screw set screws (39) into upper cone (9).

L-1.7) Install sealing mandrel (27) through bonded seals (24) in center coupling (10).

**CAUTION8:** Do not damage bonded seals during installation.

L-1.8) Install o-ring (45) in o-ring groove in plug (5).

L-1.9) Install plug (5) into end of sealing mandrel (27).

**CAUTION7:** Do not rip or tear o-ring during installation.

L-1.10) Screw upper mandrel (2) onto sealing mandrel (27).

L-1.11) Screw set screws (40) into upper mandrel (2).

L-1.12) Assemble upper slip body assembly and install:

L-1.12.1) Install releasing slips (7), upper slips (8) and upper slip springs (26) into upper slip body (6). Wedge slips outward.

**NOTE10:** Install two (2 ea) springs per slip (Fig. 4).

L-1.12.2) Screw upper slip support (33) into upper slip body (6). Remove wedges.

L-1.12.3) Install upper slip body assembly onto upper mandrel (2).

L-1.13) Install compression spring (4) onto upper mandrel (2).

L-1.14) Screw pulling head (1) onto upper mandrel (2).

**CAUTION5:** Compression spring (4) will be compressed with spring tension against pulling head (1).

L-1.15) Screw set screws (41) into pulling head (1).

L-1.16) Moving to lower end of tool, screw gage ring (29) onto center coupling (10).



Fig. 4



**AS RETRIEVABLE BRIDGE PLUG  
RIGHT-HAND SET / RELEASE  
11-3/4", HEAVY DUTY MANDREL, NC 50  
TOOL JOINT**

Manual No:  
**DL-725-11750-1650**

Revision: **A**

Revision Date:  
**02/15/2023**

Authored by: J.Anderson

Approved by: E.Visaez

**L) ASSEMBLY (cont'd)**

L-1.17) Assemble rubber mandrel assembly and install:

L-1.17.1) Install o-ring (47) in o-ring groove in rubber mandrel (11).

L-1.17.2) Install secondary rubber mandrel (36) on rubber mandrel (11).

**CAUTION<sub>7</sub>**: Do not rip or tear o-ring during installation.

L-1.17.3) Install rubber retainer (15), elements (13, 14) and rubber spacers (12) onto secondary rubber mandrel (36).

L-1.17.4) Install rubber mandrel assembly onto sealing mandrel (27).

L-1.18) Screw rubber mandrel (11) into center coupling (10).

**CAUTION<sub>7</sub>**: Do not rip or tear o-ring during installation.

L-1.19) Screw J-slot mandrel (20) onto sealing mandrel (27).

L-1.20) Screw set screws (40) into J-slot mandrel (20).

L-1.21) Screw lower rubber mandrel (34) onto rubber mandrel (11).

L-1.22) Screw set screws (40) into lower rubber mandrel (34).

L-1.23) Screw lower cone assembly (16) into rubber retainer (15).

L-1.24) Assemble drag block body assembly and install:

L-1.24.1) Install lower slips (17) and lower slip springs (25) into drag block body (18). Wedge slips outward.

**NOTE<sub>11</sub>**: Install two (2ea) springs per slip (Fig. 5).

L-1.24.2) Install lower slip support (32) into drag block body (18).

L-1.24.3) Align threaded holes in drag block body (18) with holes in upper slip support (32). Screw cap screws (43) into drag block body (18). Remove wedges.

L-1.24.4) Install drag block body assembly onto lower rubber mandrel (34).

L-1.25) Install drag blocks (22) and drag block springs (3) into drag block body (18). Compress drag blocks (22) with drag block assembly tool (T1).

**NOTE<sub>12</sub>**: Install six (6ea) springs per drag block (Fig. 6).

L-1.26) Install drag block retainer (21) onto drag block body (18) capturing ends of drag blocks (22).

**NOTE<sub>13</sub>**: Align holes in drag block retainer (21) with threaded holes in drag block body (18).

L-1.27) Install drag block body adapter (31) onto lower rubber mandrel (34). (**NOTE<sub>14</sub>**: Do not make up yet.)

L-1.28) Screw rubber mandrel cap (19) onto lower rubber mandrel (34).

L-1.29) Clamp and hold drag block body adapter (31) securely. Screw body extension (28) into drag block body adapter (31) (**NOTE<sub>6</sub>**: Left-hand threads).

L-1.30) Screw set screws (38) into drag block body adapter (31).

L-1.31) Screw drag block body adapter (31) into drag block body (18) (**NOTE<sub>6</sub>**: Left-hand threads).

L-1.32) Screw set screws (42) into drag block body (18). Release drag blocks (22).

L-1.33) Install J-pin body (23) onto J-slot mandrel (20).

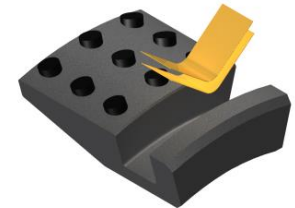


Fig. 5

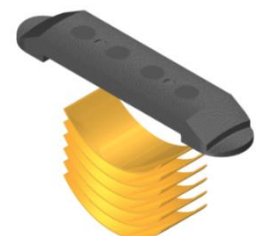


Fig. 6



**AS RETRIEVABLE BRIDGE PLUG  
RIGHT-HAND SET / RELEASE  
11-3/4", HEAVY DUTY MANDREL, NC 50  
TOOL JOINT**

Manual No:  
**DL-725-11750-1650**

Revision: **A**

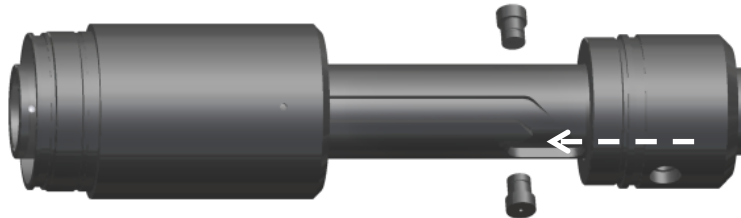
Revision Date:  
**02/15/2023**

Authored by: J.Anderson

Approved by: E.Visaez

**L) ASSEMBLY (cont'd)**

Fig. 7



L-1.34) Align holes in J-pin body (23) with running position of J-slot mandrel (20). Install J-pins (35) into J-pin body (23) (Fig. 7).

L-1.35) Slide drag block body assembly down and screw body extension (28) onto J-pin body (23) (**NOTE6:** Left-hand threads).

**NOTE7:** Drag block body assembly must be free to rotate.

L-1.36) Screw set screws (41) into body extension (28).

L-1.37) Install o-ring (48) into o-ring groove in bottom sub (28).

L-1.38) Screw bottom sub (37) onto J-slot mandrel (20).

**CAUTION7:** Do not rip or tear o-ring during installation.

L-1.39) Screw set screws (41) into bottom sub (37).

L-2) Unclamp upper cone (9) from vise and remove assembled tool.

**M) PARTS LIST**

ITEM	QTY	DESCRIPTION	MATERIAL	P/N 72511RR3-XBEE
1	1	PULLING HEAD	DLMS110	72585715
2	1	UPPER MANDREL	DLMS110	72585210
3	48	DRAG BLOCK SPRING	-	9101900
4	1	COMPRESSION SPRING	DLMCRSP	60373920
5	1	PLUG	DLMS110	72585216
6	1	UPPER SLIP BODY	DLMS110	72511320
7	2	RELEASING SLIP	DLMS110	60011125
8	3	CARBIDE UPPER SLIP	DLMS110	72511115C
9	1	UPPER CONE	DLMS110	72511410
10	1	CENTER COUPLING	DLMS110	72511620
11	1	RUBBER MANDREL	DLMS110	72585220
12	2	RUBBER SPACER	DLMS35	60211X840
13	1	ELEMENT	70 DURO NITRILE	60211X511
14	2	ELEMENT	90 DURO NITRILE	60211X513
15	1	RUBBER RETAINER	DLMS35	60211X850
16	1	LOWER CONE	DLMS110	60311420
17	5	LOWER SLIP	DLMS110	60011135C
18	1	DRAG BLOCK BODY	DLMS110	60311X335HT





**AS RETRIEVABLE BRIDGE PLUG  
RIGHT-HAND SET / RELEASE  
11-3/4", HEAVY DUTY MANDREL, NC 50  
TOOL JOINT**

Manual No:  
**DL-725-11750-1650**

Revision: **A**

Revision Date:  
**02/15/2023**

Authored by: J.Anderson

Approved by: E.Visaez

**M) PARTS LIST (cont'd)**

ITEM	QTY	DESCRIPTION	MATERIAL	P/N 72511RR3-XBEE
19	1	RUBBER MANDREL CAP	DLMS110	72485230
20	1	J-SLOT MANDREL	DLMS110	72595230-XAB
21	1	DRAG BLOCK RETAINER	DLMS35	60311X911
22	8	700 CARBIDE DRAG BLOCK	DLMSDB4	9070900C
23	1	J-PIN BODY	DLMS110	72585875
24	2	BONDED SEAL	90 DURO NITRILE	60070520
25	10	LOWER SLIP SPRING	-	7170901
26	10	TAPERED SLIP SPRING	DLMINC625	DL94830
27	1	SEALING MANDREL - HEAVY DUTY	DLMS110	72595213
28	1	BODY EXTENSION	DLMS110	72595370
29	1	GAGE RING	DLMS60	60211X830
30	1	SEAL RETAINING RING	DLMS35	72511225
31	1	DRAG BLOCK BODY ADAPTER	DLMS110	72511355
32	1	LOWER SLIP SUPPORT	DLMS60	60311X912
33	1	UPPER SLIP SUPPORT	DLMS110	72511880
34	1	LOWER RUBBER MANDREL	DLMS110	72595221
35	2	J-PIN	DLMS110	72585870-15 (15,000#)
				72585870-25 (25,000#)
				72585870 (STD 50,000#)
36	1	SECONDARY RUBBER MANDREL	DLMS35	60311221
37	1	BOTTOM SUB	DLMS110	72595630-YBEE
38	3	1/4-20 UNC X 1/2 SOCKET SET SCREW	STEEL	SSS025C050
39	3	5/16-18 UNC X 7/16 SOCKET SET SCREW	STEEL	SSS031C043
40	9	3/8-16 UNC X 3/8 SOCKET SET SCREW	STEEL	SSS037C037
41	10	3/8-16 UNC X 1/2 SOCKET SET SCREW	STEEL	SSS037C050
42	2	3/8-16 UNC X 3/4 SOCKET SET SCREW	STEEL	SSS037C075
43	2	1/2-13 UNC X 5/8 SOCKET CAP SCREW	STEEL	SCS050C062
44	2	153 O-RING	90 DURO NITRILE	90153
45	1	228 O-RING	90 DURO NITRILE	90228
46	1	252 O-RING	90 DURO NITRILE	90252
47	1	254 O-RING	90 DURO NITRILE	90254
48	1	342 O-RING	90 DURO NITRILE	90342

REDRESS KIT (RDK)	72511050-2
ASSEMBLED WEIGHT	1,027 LBS



**AS RETRIEVABLE BRIDGE PLUG  
RIGHT-HAND SET / RELEASE  
11-3/4", HEAVY DUTY MANDREL, NC 50  
TOOL JOINT**

Manual No:  
**DL-725-11750-1650**

Revision: **A**

Revision Date:  
**02/15/2023**

Authored by: J.Anderson

Approved by: E.Visaez

**M) PARTS LIST (cont'd)**

**M-1) ELASTOMER TRIM OPTIONS**

**NOTE16:** For temperature range, refer to Elastomer Trim Temperature Guide.

**M-1.1) HSN**

ITEM	QTY	DESCRIPTION	MATERIAL	P/N 72511RR3H-XBEE
13	1	ELEMENT	70 DURO HSN	60211X511H
14	2	ELEMENT	90 DURO HSN	60211X513H
24	2	BONDED SEAL	90 DURO HSN	60070520H
44	2	153 O-RING	90 DURO HSN	90153H
45	1	228 O-RING	90 DURO HSN	90228H
46	1	252 O-RING	90 DURO HSN	90252H
47	1	254 O-RING	90 DURO HSN	90254H
48	1	342 O-RING	90 DURO HSN	90342H

REDRESS KIT (RDK)		72511050H-2
-------------------	--	-------------

**M-1.2) VITON**

ITEM	QTY	DESCRIPTION	MATERIAL	P/N 72511RR3V-XBEE
13	1	ELEMENT	70 DURO VITON	60211X511V
14	2	ELEMENT	90 DURO VITON	60211X513V
24	2	BONDED SEAL	90 DURO VITON	60070520V
44	2	153 O-RING	90 DURO VITON	90153V
45	1	228 O-RING	90 DURO VITON	90228V
46	1	252 O-RING	90 DURO VITON	90252V
47	1	254 O-RING	90 DURO VITON	90254V
48	1	342 O-RING	90 DURO VITON	90342V

REDRESS KIT (RDK)		72511050V-2
-------------------	--	-------------



**AS RETRIEVABLE BRIDGE PLUG  
RIGHT-HAND SET / RELEASE  
11-3/4", HEAVY DUTY MANDREL, NC 50  
TOOL JOINT**

Manual No:  
**DL-725-11750-1650**

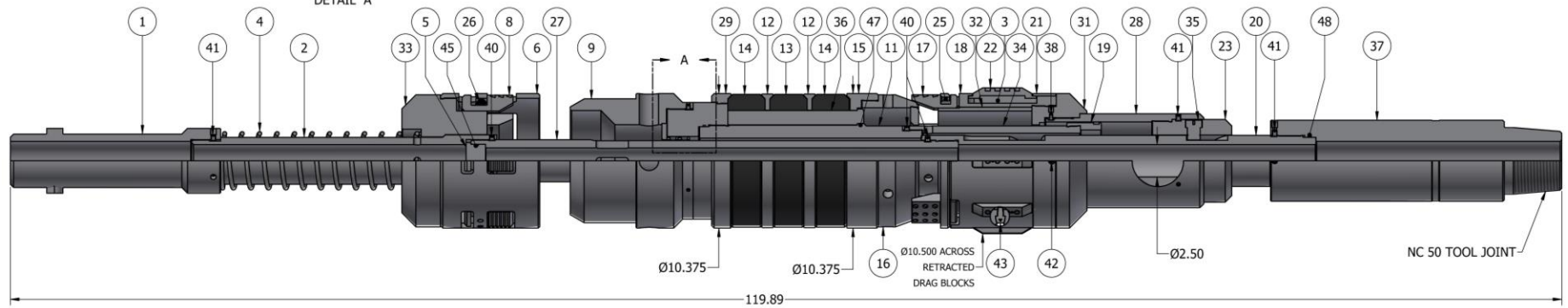
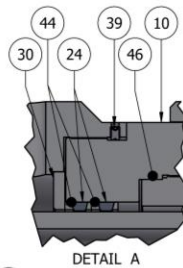
Revision: **A**

Revision Date:  
**02/15/2023**

Authored by: *J.Anderson*

Approved by: *E.Visaez*

**N) TECHNICAL ILLUSTRATION**





**AS RETRIEVABLE BRIDGE PLUG**  
**RIGHT-HAND SET / RELEASE**  
**11-3/4", HEAVY DUTY MANDREL, NC 50**  
**TOOL JOINT**

Manual No:  
**DL-725-11750-1650**

Revision: **A**

Revision Date:  
**02/15/2023**

*Authored by: J.Anderson*

*Approved by: E.Visaez*

**O) REVISION HISTORY**

<b>DATE</b>	<b>REVISION</b>	<b>DESCRIPTION OF CHANGES</b>	<b>REVISED BY</b>	<b>APPROVED BY</b>
02/15/2023	A	Created manual	-	-