



SETTING ADAPTER KIT FOR RSB PACKER FOR B2 #20 SETTING TOOL 9-5/8" X 6.000"

Manual No:
DL-267-9625-1632

Revision: **A**

Revision Date:
12/14/2022

Authored by: J.Anderson

Approved by: E.Visaez

A) DESCRIPTION

The Setting Adapter Kit for Retrievable Seal Bore (RSB) Packer is used set the packer on a hydraulic setting assembly. The kit is designed to be used on a B-2 hydraulic setting assembly or any setting assembly with the same configuration.

The Setting Adapter Kit automatically disconnects from the packer during packer setting to be easily retrieved and prepared to run again.

NOTE₁: Refer to applicable RSB Packer technical manual(s) for packer specific technical information including operating procedures and packer disassembly.

B) RELATED TOOLS (sold separately)

B-1) 9-5/8" X 6.000" RSB Packer (P/N varies)—refer to applicable technical manual.

C) SPECIFICATION GUIDE

CASING SIZE (INCHES)	TOOL OD (INCHES)	PRESSURE SETTING TOOL	PART NUMBER
9-5/8	8.012	B2 #20 HYDRAULIC SETTING TOOL	26795-20

D) PRE-INSTALLATION INSPECTION PROCEDURES

CAUTION₁: D&L ships tool connections made-up **HAND TIGHT**—labeled with hand-tight tape on the tool (Fig. 1)—unless stated otherwise. Tighten/torque all connections properly before operating tool.



Fig. 1

GENERAL THREAD CONNECTION TORQUE RECOMMENDATIONS			
STUB ACME / ACME THREADS	INTERNAL TAPERED TUBING THREADS		PREMIUM THREADS
	UP TO 2-3/8"	GREATER THAN 2-3/8"	
600 – 800 FT-LBS	600 – 800 FT-LBS	800 – 1,200 FT-LBS	Consult thread manufacturer's recommendations.

GENERAL SCREW TORQUE RECOMMENDATIONS									
SCREW SIZE (INCHES)	#6	#8	#10	1/4	5/16	3/8	7/16	1/2	5/8 and larger
TORQUE RANGE (INCH-POUNDS)	5 – 8	10 – 15	18 – 25	25 – 40	50 – 80	90 – 135	160 – 210	250 – 330	450 - 650

Before first use, D&L recommends disassembly and inspection of the tool unless stated otherwise. Ensure parts have not been damaged during shipping. Replace damaged parts with D&L replacement parts. Contact D&L sales for replacement part information.

Re-assemble the tool after inspection. Install parts in the correct order and orientation. Properly tighten connections.

Before re-using the tool, D&L recommends disassembly and inspection of the tool. Clean parts and ensure parts are in good working condition. Replace worn or damaged parts with D&L replacement parts.

When redressing the tool, D&L recommends replacement of all seals, elements, o-rings, shear screws, etc. Contact D&L sales for redress kit and/or other replacement part information.

D & L OIL TOOLS
P.O. BOX 52220 TULSA, OK 74152
PHONE: (800) 441-3504 www.dloiltools.com



SETTING ADAPTER KIT FOR RSB PACKER FOR B2 #20 SETTING TOOL 9-5/8" X 6.000"

Manual No:
DL-267-9625-1632

Revision: **A**

Revision Date:
12/14/2022

Authored by: *J.Anderson*

Approved by: *E.Visaez*

E) OPERATING PROCEDURES

Assemble the setting adapter kit to the packer and the pressure setting assembly. Run the assembly to the desired depth. Follow the pressure setting assembly manufacturer's procedures for setting equipment. Rotate the work string to the right approximately 10-12 turns to disconnect the setting assembly from the packer. After setting packer, retrieve setting assembly and disassemble.

F) STORAGE RECOMMENDATIONS

When preparing the tool for storage, follow the Pre-Installation Inspection Procedures. Re-assemble the tool with connections hand-tight only and in running position if applicable.

Store the tool, if possible, in an enclosed, temperature and humidity controlled environment. Avoid excessively high temperatures over long periods of time. Keep tool dry and protected from condensation. Do not store in contact with or near volatile or corrosive chemicals. Do not store near ozone generating equipment or operations such as welding.

G) RECOMMENDED HAND TOOLS

- VISE
- GLOVES
- ALLEN WRENCHES
- TAPE MEASURE
- O-RING PICK
- BAR
 - 1/2-INCH
 - 3/4-INCH
- PAINT BRUSH, 2-INCH
- PIPE WRENCH, 3-FT (2 EA)
- "CHEATER" PIPE, 4-FT LONG
- ADJUSTABLE WRENCH, 12-INCH
- CORDLESS DRILL, 18V
- SNAP RING SPREADER PLIERS
- ALIGNING PUNCH
- SCREWDRIVER SET, FLAT-TIPPED
- SOCKET SETS
 - 3/8-INCH DRIVE
 - 1/2-INCH DRIVE
- HAMMERS
 - SLEDGE
 - BALL PEEN
 - DEAD BLOW

H) ASSEMBLY ONTO PRESSURE SETTING ASSEMBLY AND RSB PACKER

NOTE₂: Clean and inspect all parts. Replace all worn and damaged parts. Install parts in proper order, and orientation and tighten/torque all connections properly.

H-1) Install setting sleeve (1) over lower end of pressure setting tool.

NOTE₄: Pressure setting tool is not part of setting adapter kit and is not shown.

H-2) Screw outer adapter (2) onto pressure setting tool.

H-3) Screw set screws (3) into outer adapter (2).

H-4) Assemble adapter nut assembly:

H-4-.1) Clamp adapter nut (6) in vise.

H-4.1.1) Install o-ring (10) in o-ring groove in upper end of adapter nut (6).

H-4.1.2) Install o-rings (11) in o-ring grooves in lower end of adapter nut (6).

H-4.1.3) Install o-rings (11) in o-ring grooves in ball seat (4).

H-4.1.4) Screw ball seat (4) onto adapter nut (6).

H-4.1.5) Screw set screws (8) into ball seat (4).

H-4-.2) Unclamp adapter nut (6) from vise and remove adapter nut assembly.

H-5) Screw adapter nut assembly onto pressure setting assembly. Make up wrench tight.

CAUTION₂: Do NOT rip or tear o-ring during installation.

H-6) Screw set screws (9) into adapter nut (6).

H-7) Install and make up RSB Packer to pressure setting assembly:

H-7-.1) Grease seal bore of RSB Packer.



SETTING ADAPTER KIT
FOR RSB PACKER FOR B2 #20 SETTING
TOOL
9-5/8" X 6.000"

Manual No:
DL-267-9625-1632

Revision: **A**

Revision Date:
12/14/2022

Authored by: *J.Anderson*

Approved by: *E.Visaez*

H) ASSEMBLY...(cont'd)

H-7-.2) Install setting sleeve and top sub of RSB Packer onto adapter nut assembly. Screw top sub of RSB Packer onto adapter nut (6) approximately 10-12 turns (**NOTE**s: Left-hand threads).

CAUTION2: Do NOT rip or tear o-rings during installation.

H-7-.3) Screw setting sleeve (1) onto outer adapter (2) until setting sleeve (1) contacts setting sleeve of RSB Packer (**NOTE**s: Make up hand tight only).

H-7-.4) Screw set screws (7) into setting sleeve (1).

I) DISASSEMBLY FROM PRESSURE SETTING ASSEMBLY

NOTE3: Pressure setting assembly is not part of setting adapter kit and is not shown.

I-1) Unscrew and remove set screws (7) from setting sleeve (1).

I-2) Unscrew and remove setting sleeve (1) outer adapter (2).

I-3) Unscrew and remove set screws (9) from adapter nut (6).

I-4) Unscrew adapter nut (6) from pressure setting tool. Remove adapter nut assembly and disassemble:

I-4-.1) Clamp adapter nut (6) in vise.

I-4.1.1) Unscrew and remove set screws (8) from ball seat (4).

I-4.1.2) Unscrew and remove ball seat (4) from adapter nut (6).

I-4.1.2.1) Remove o-rings (11) from ball seat (4).

I-4.1.3) Unclamp and remove adapter nut (6) from vise.

I-4.1.3.1) Remove o-rings (10, 11) from adapter nut (6).

I-5) Unscrew and remove set screws (3) from outer adapter (2).

I-6) Unscrew and remove outer adapter (2) from pressure setting assembly.

I-7) Remove setting sleeve (1) from pressure setting assembly..



SETTING ADAPTER KIT
FOR RSB PACKER FOR B2 #20 SETTING
TOOL
9-5/8" X 6.000"

Manual No:
DL-267-9625-1632

Revision: **A**

Revision Date:
12/14/2022

Authored by: *J.Anderson*

Approved by: *E.Visaez*

J) PARTS LIST

ITEM	QTY	DESCRIPTION	MATERIAL	P/N 26795-20
1	1	SETTING SLEEVE	DLMS110	26796470
2	1	OUTER ADAPTER	DLMS110	26796102
3	2	1/4-20 UNC X 1/2 SOCKET SET SCREW	STEEL	SSS025C050
4	1	DRAINING BALL SEAT	DLMS110	97495615
5	1	1-3/8 BRASS BALL	DLM360BRS	BB1375
6	1	ADAPTER NUT	DLMS110	97495460
7	3	5/16-18 UNC X 3/4 SOCKET SET SCREW	STEEL	SSS031C075
8	4	5/16-18 UNC X 5/16 SOCKET SET SCREW	STEEL	SSS031C031
9	2	1/4-20 UNC X 3/8 SOCKET SET SCREW	STEEL	SSS025C037
10	1	230 O-RING	90 DURO NITRILE	90230
11	4	358 O-RING	90 DURO NITRILE	90358

REDRESS KIT (RDK)		26795-20-050
ASSEMBLED WEIGHT		169 LBS

J-1) REDRESS KIT

ITEM	QTY	DESCRIPTION	MATERIAL	P/N 26795-20-050
5	1	1-3/8 BRASS BALL	DLM360BRS	BB1375
10	1	230 O-RING	90 DURO NITRILE	90230
11	4	358 O-RING	90 DURO NITRILE	90358



SETTING ADAPTER KIT FOR RSB PACKER FOR B2 #20 SETTING TOOL 9-5/8" X 6.000"

Manual No:
DL-267-9625-1632

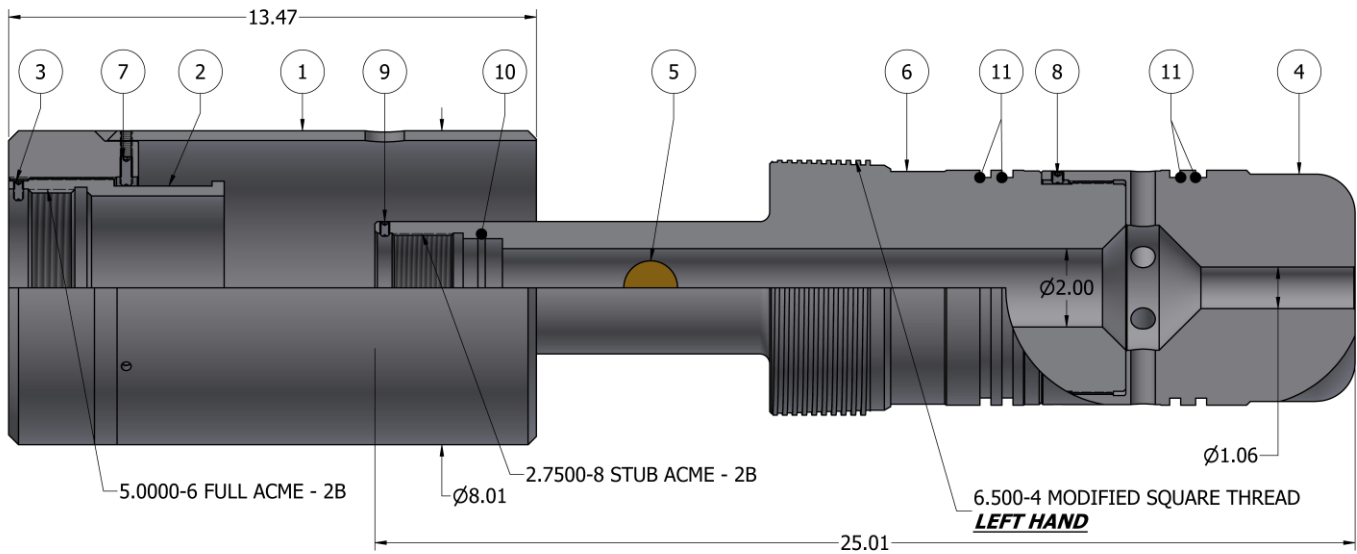
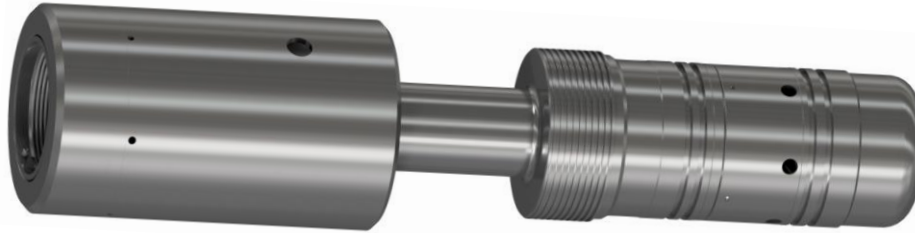
Revision: **A**

Revision Date:
12/14/2022

Authored by: J.Anderson

Approved by: E.Visaez

K) TECHNICAL ILLUSTRATION



L) REVISION HISTORY

DATE	REVISION	DESCRIPTION OF CHANGES	REVISED BY	APPROVED BY
12/14/2022	A	Created manual	-	-